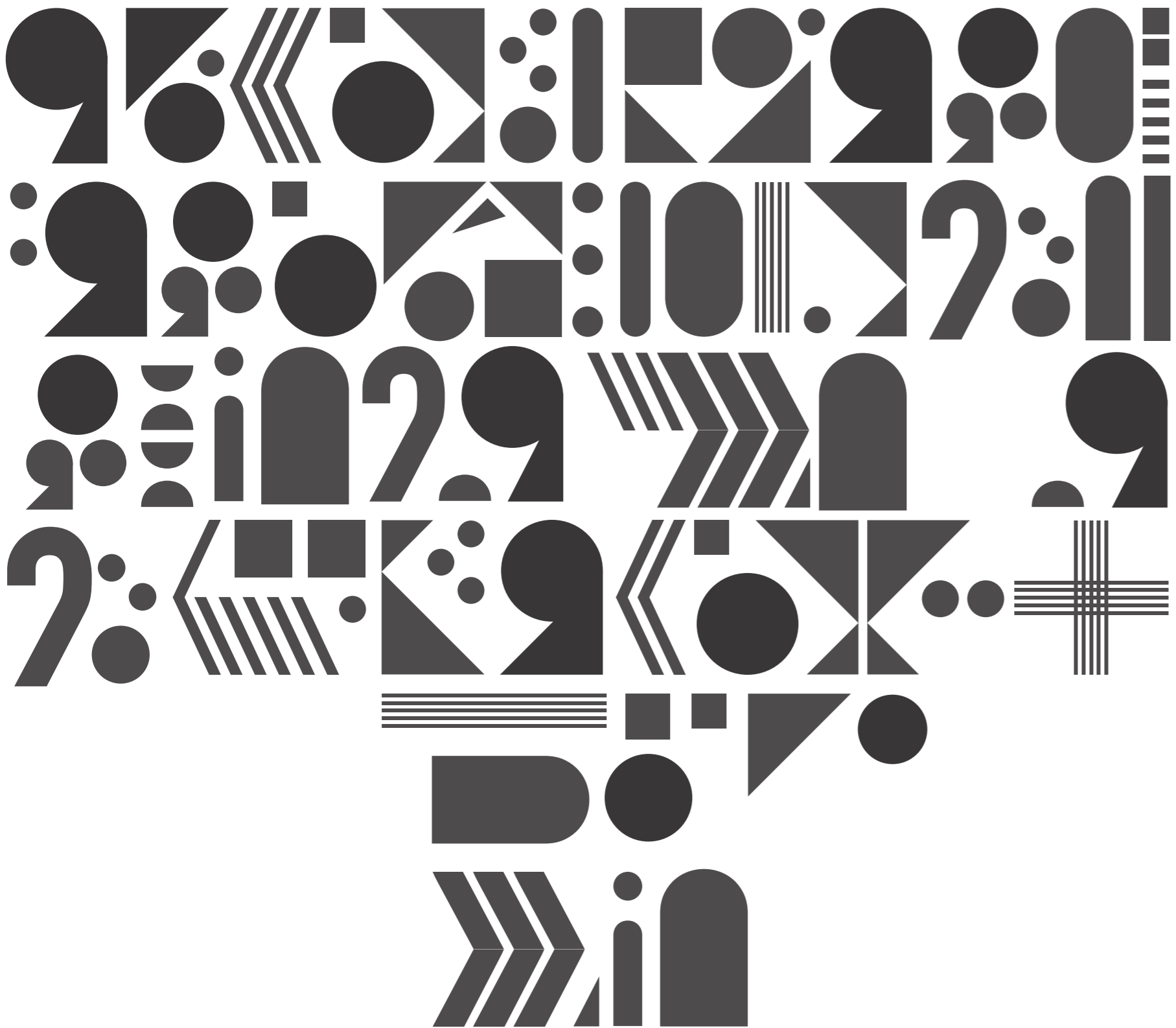


2020[®]
FURNITURE DESIGN

SPECIALISTS IN BREAK OUT SPACES



CRAFTSMANSHIP AND ENGINEERING ARE AT OUR HEART. WE MAKE THINGS THAT WORK, AND MANUFACTURE INTERESTING AND ENGAGING SOLUTIONS FOR EVERY BREAKOUT SPACE.






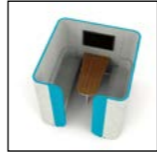
We are design led, blending function with form in a creative and stylish way. Our processes ensure consistency, and our innovative use of the latest CNC technology, ensures quality and reliability. We have been doing this for a long time, with an established team of craftsmen. We know how to design and manufacture quality, value for money soft seating products. We lead the way in understanding the breakout and collaborative working space, and work with our dealer partners to bring spaces to life.

We are 2020 Furniture, we are a break from the norm.

2020 CONTENTS

	ALLY		BENNY		CONFERENCE
	CIRCA		CLIMB		FAITH
	CONTOUR		CREATOR		MAST
	HAZZY		LINCS		MONO
	MILO		MINTAY		N-ALLY
	MOR		MUDA		RIPPLE
	PIC N MIX		RIFT		SAVANNAH
	SALOON		SOLUS		STREAM
	SESSION		VERTA		
	THINKPOD		CAVEA		

2020 FLEXI SCREEN PODS

	FOCUS		FACE TO FACE
	HEX		POD
	SQU		
	SQUARE		
100	MATERIAL SPECIFICATIONS		
101	CARE INSTRUCTIONS		
102	FABRIC BANDS		
103	DELIVERY, LEAD TIMES & WARRANTY		
108	CONTACT DETAILS		
	WEBSITE		

ALLY

The Ally modular system provides areas for relaxation, individual working, breakout space, informal meeting areas and social space. Providing a relaxed aesthetic Ally is extremely flexible allowing you to configure and re-configure to meet the demands of changing environments.

Whether you are looking to create some landscape seating, a meeting booth, acoustic screens, a breakout seating area or a statement flowing piece then Ally does it all.

Available in both curved and straight formats, with low, mid and high backs and with a laminated or upholstered finish with the option of A/C and USB ports.



Ally Seating Collection					
Product image	Code	Description	Dimensions mm	Band 1	Band 2
	ALL 1	A single seater stool.	W 600 x D 595 x H 450	£500	£526
	ALL 2	A two seater stool.	W 1200 x D 595 x H 450	£692	£730
	ALL 3	A three seater stool.	W 1800 x D 595 x H 450	£824	£890
	ALL 4	A single seat chair.	W 600 x D 735 x H 800	£732	£778
	ALL 5	A two seater sofa chair.	W 1200 x D 735 x H 800	£1,010	£1,062
	ALL 6	A three seater sofa chair.	W 1800 x D 735 x H 800	£1,414	£1,476
	ALL 7	A single seat chair with medium height back.	W 600 x D 735 x H 1150	£858	£904
	ALL 8	A two seater sofa with medium height back.	W 1200 x D 735 x H 1150	£1,306	£1,380
	ALL 9	A three seater sofa with medium height back.	W 1800 x D 735 x H 1150	£1,598	£1,692
	ALL 10	A single seat chair with high back.	W 600 x D 735 x H 1500	£1,038	£1,098
	ALL 11	A two seater sofa with high back.	W 1200 x D 735 x H 1500	£1,892	£1,990
	ALL 12	A three seater sofa with high back.	W 1800 x D 735 x H 1500	£2,322	£2,452
	ALL 13	A two seater booth.	W 2230 x D 650 x H 1500	£3,816	£4,058
	ALL 14	A two seater booth with end panels.	W 2230 x D 700 x H 1500	£4,190	£4,472
	ALL 15	A four seater booth.	W 2230 x D 1250 x H 1500	£5,306	£5,642
	ALL 16	A four seater booth with end panels.	W 2230 x D 1300 x H 1500	£5,822	£6,216
	ALL 17	A 6 seater booth.	W 2230 x D 1850 x H 1500	£7,170	£7,622
	ALL 18	A 6 seater booth with end panels.	W 2230 x D 1900 x H 1500	£7,868	£8,398
	ALL 19	A 90 degree inside corner stool with radius.	W 660 x D 660 x H 450	£484	£508
	ALL 20	A 90 degree outside corner stool with radius.	W 800 x D 800 x H 450	£564	£588
	ALL 21	A 60 degree large stool with inside radius.	W 1180 x D 595 x H 450	£678	£714
	ALL 22	A 60 degree 3 seater stool with outside radius.	W 2235 x D 595 x H 450	£928	£956

ALLY



Ally Seating Collection

Product image	Code	Description	Dimensions mm	Band 1	Band 2
	ALL 23	A 45 degree outside stool with radius.	W 1175 x D 595 x H 450	£678	£714
	ALL 24	A 90 degree inside corner chair with radius.	W 800 x D 800 x H 800	£728	£764
	ALL 25	A 90 degree inside corner chair with radius and medium height back.	W 800 x D 800 x H 1150	£932	£978
	ALL 26	A 90 degree inside corner chair with radius and high back.	W 800 x D 800 x H 1500	£1,116	£1,198
	ALL 27	A 60 degree large chair with inside radius.	W 1500 x D 735 x H 800	£1,194	£1,272
	ALL 28	A 60 degree large chair with inside radius and medium height back.	W 1500 x D 735 x H 1150	£1,518	£1,622
	ALL 29	A 60 degree large chair with inside radius and high back.	W 1500 x D 735 x H 1500	£1,846	£1,970
	ALL 30	A 90 degree outside corner chair with radius.	W 800 x D 800 x H 800	£728	£764
	ALL 31	A 90 degree outside corner chair with radius and medium height back.	W 800 x D 800 x H 1150	£932	£978
	ALL 32	A 90 degree outside corner chair with radius and medium height back.	W 800 x D 800 x H 1500	£1,116	£1,198
	ALL 33	A 45 degree large chair with outside radius.	W 1175 x D 735 x H 800	£984	£1,044
	ALL 34	A 60 degree large chair with outside radius and medium height back.	W 1175 x D 735 x H 1150	£1,264	£1,350
	ALL 35	A 60 degree large chair with outside radius and high back.	W 1175 x D 735 x H 1500	£1,550	£1,658
	ALL 36	A 60 degree 3 seater chair with outside radius.	W 2235 x D 735 x H 800	£1,220	£1,292
	ALL 37	A 60 degree 3 seater chair with outside radius and medium height back.	W 2235 x D 735 x H 1150	£1,556	£1,652
	ALL 38	A 60 degree 3 seater chair with outside radius and high back.	W 2235 x D 735 x H 1500	£1,894	£2,011
	ALL 39	An Armchair	W 840 x D 735 x H 800	£1,096	£1,166
	ALL 40	A 2 Seater Sofa	W 1440 x D 735 x H 800	£1,370	£1,450
	ALL 41	A Three Seater Sofa	W 2040 x D 735 x H 800	£1,780	£1,866



BENNY

Benny is a standard linear range made with quality workmanship. Perfect for Space saving and available as back to back seating, Benny is a modular design creating curves, angles and booths which is perfect for breakout, dining, office and leisure. The Benny range has a vast amount of materials that can be upholstered making it easy to wipe down and keep clean.

Also available option using power modules and different height backs.



Benny Seating Collection					
Product image	Code	Description	Dimensions mm	Band 1	Band 2
	BEN 1	A two seater singular bench seat with laminated kick board. Useful for a linear run or end of booth.	W 1000 x D 700 x H 900	£954	£1,000
	BEN 2	A two seater singular bench seat with laminated kick board and medium height back. Useful for a linear run or end of booth.	W 1000 x D 700 x H 1200	£1,074	£1,120
	BEN 3	A two seater singular bench seat with laminated kick board and high height back. Useful for a linear run or end of booth.	W 1000 x D 700 x H 1500	£1,192	£1,238
	BEN 4	A two seater double bench seat with laminated kick board. Back to back seating.	W 1000 x D 1330 x H 900	£1,718	£1,804
	BEN 5	A two seater double bench seat with laminated kick board. With medium height back to back seating.	W 1000 x D 1330 x H 1200	£1,932	£2,018
	BEN 6	A two seater double bench seat with laminated kick board. With a high height back to back seating.	W 1000 x D 1330 x H 1500	£2,146	£2,230

- *Bespoke sizes available.
- *Button and flute detail upon request.
- *Ben 1 & 2 available @ 600mm Deep.
- *Available with and without a plinth.



CAVEA

Moving away from keeping with the generic only timber structures of bleacher style seating, Cavea offers a pleasing to the eye upholstered corner and storage slots. The availabilities using either polished ply, laminated tops and upholstered cushions give fantastic options to match existing or new furniture specifications.

Cavea is a product that embraces collaboration. The stylish range consists of one to three tiers with or without storage and castors if required with steps and hand rails to create a large or small modern modular learning area.

The Cavea is also available as separate modules for meeting with friends, lunch and conversations with groups, perfect for breakout areas.



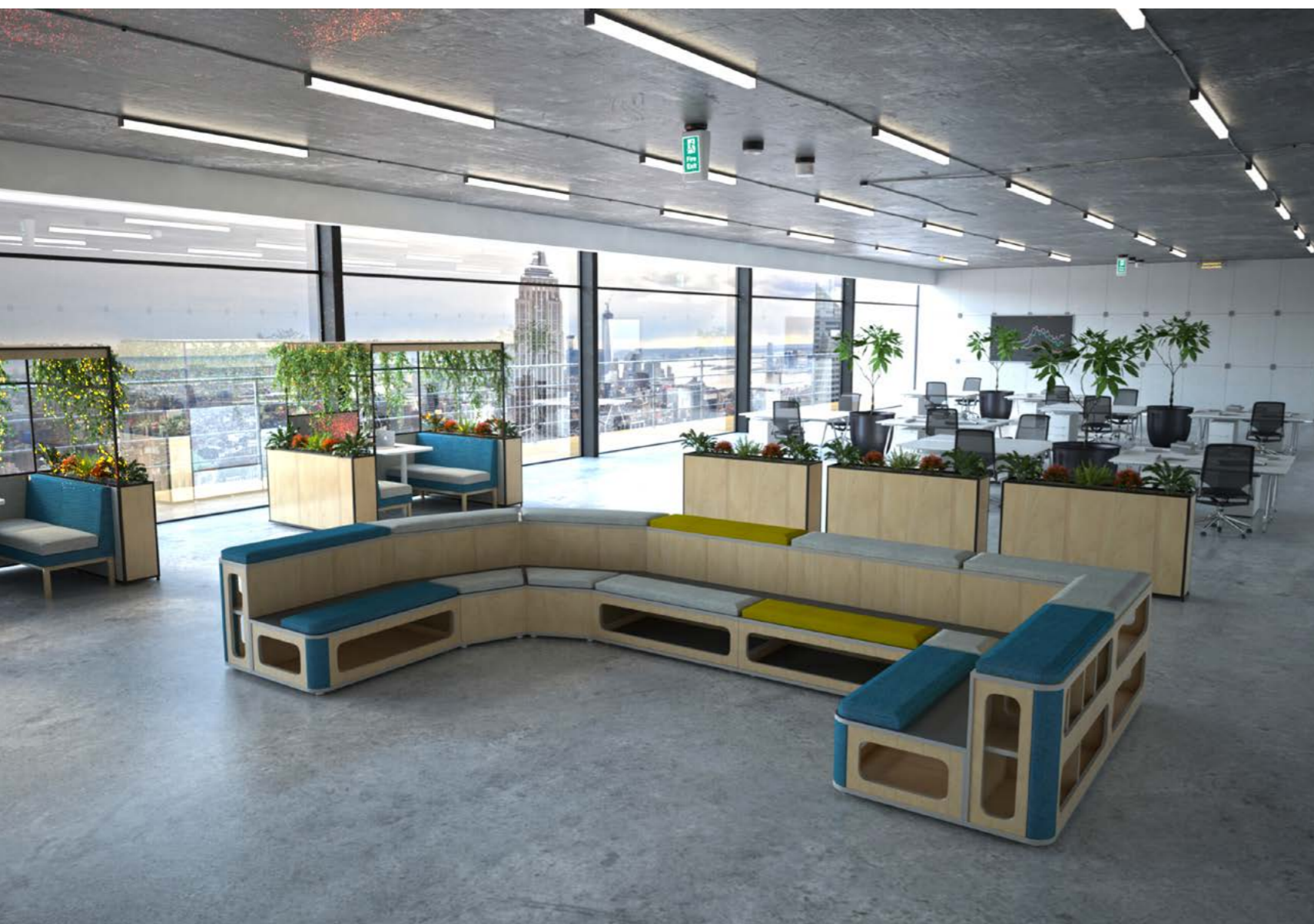
Product image	Code	Description	Dimensions mm	Band 1	Band 2
	CAV 001	A Single unit consisting of 6 seats as a 2 tiered system made from Ply with upholstered corners and seat cushions.	W1200 x D1040 x H800	€2,520	€2,610
	CAV 002 R	A modular right hand unit consisting of 6 seats as a 2 tiered system made from Ply with upholstered corners and seat cushions.	W1200 x D1040 x H800	€2,404	€2,494
	CAV 003 L	A modular left hand unit consisting of 6 seats as a 2 tiered system made from Ply with upholstered corners and seat cushions.	W1200 x D1040 x H800	€2,404	€2,494
	CAV 004	A modular centre unit consisting of 6 seats as a 2 tiered system made from Ply including 2 seat cushions.	W1200 x D1040 x H800	€2,276	€2,370
	CAV 005	A modular corner unit consisting of 5 seats as a 2 tiered system made from Ply including 2 seat cushions.	W1040 x D1040 x H800	€2,952	€3,068
	CAV 006	A modular 45degree corner unit consisting of 3 seats as a 2 tiered system made from Ply including 2 seat cushions.	W1289 x D953 x H800	€2,726	€2,816
	CAV 007	A modular centre unit consisting of 9 seats as a 2 tiered system made from Ply including 3 seat cushions and high back.	W1200 x D1735 x H1800	€3,642	€3,824
	CAV 008	A modular 45degree corner unit consisting of 6 seats as a 2 tiered system made from Ply including 3 seat cushions and high back.	W1829 x D1735 x H1800	€4,408	€4,534
	CAV 009 R	A right hand modular construction of steps for the 3 tiered system.	W825 x D1735 x H1800	€3,274	€0
	CAV 010 L	A left hand modular construction of steps for the 3 tiered system.	W825 x D1735 x H1800	€3,274	€0
	CAV 011	A centre module construction of steps for the 3 tiered system.	W800 x D1735 x H1800	€2,930	€0
	CAV PL1	A Large plan of the 3 tiered system including cente, 45 degree angles and steps allowing for 24-32 seats	W4413 x D4413 x H1800	€21,524	€23,276
	CAV PL2	A Large plan of the 2 tiered L shaped tiered system including cente, 90 degree corner, centres and right hand unit.	W3440 x D2240 x H1800	€9,544	€9,914

	CAV 001 - S	A Single unit consisting of 6 seats as a 2 tiered system made from Ply with upholstered corners and seat cushions. Including storage.	W1200 x D1040 x H800	€2,768	€2,872
	CAV 002 R - S	A modular right hand unit consisting of 6 seats as a 2 tiered system made from Ply with upholstered corners and seat cushions. Including storage.	W1200 x D1040 x H800	€2,646	€2,742
	CAV 003 L - S	A modular left hand unit consisting of 6 seats as a 2 tiered system made from Ply with upholstered corners and seat cushions. Including storage.	W1200 x D1040 x H800	€2,646	€2,742
	CAV 004 - S	A modular centre unit consisting of 6 seats as a 2 tiered system made from Ply including 2 seat cushions. Including storage.	W1200 x D1040 x H800	€2,502	€2,606
	CAV 005 - S	A modular corner unit consisting of 5 seats as a 2 tiered system made from Ply including 2 seat cushions. Including storage.	W1040 x D1040 x H800	€3,248	€3,374
	CAV PL2 - S	A Large plan of the 2 tiered L shaped tiered system including cente, 90 degree corner, centres and right hand unit. Including storage.	W3440 x D2240 x H1800	€10,496	€10,908



CAVEA

Option of laminated tops.



CAVEA Seating Collection – (Laminated Plywood Top)

Product image	Code	Description	Dimensions mm	Band 1	Band 2
---------------	------	-------------	---------------	--------	--------

CAVEA LAMINATED TOPS WITHOUT STORAGE

	CAV 001 - L	A Single unit consisting of 6 seats as a 2 tiered system made from Ply with upholstered corners and seat cushions.	W1200 x D1040 x H800	£2,896	£3,002
	CAV 002 R - L	A modular right hand unit consisting of 6 seats as a 2 tiered system made from Ply with upholstered corners and seat cushions.	W1200 x D1040 x H800	£2,766	£2,872
	CAV 003 L - L	A modular left hand unit consisting of 6 seats as a 2 tiered system made from Ply with upholstered corners and seat cushions.	W1200 x D1040 x H800	£2,766	£2,872
	CAV 004 - L	A modular centre unit consisting of 6 seats as a 2 tiered system made from Ply including 2 seat cushions.	W1200 x D1040 x H800	£2,620	£2,726
	CAV 005 - L	A modular corner unit consisting of 5 seats as a 2 tiered system made from Ply including 2 seat cushions.	W1040 x D1040 x H800	£3,398	£3,528
	CAV 006 - L	A modular 45degree corner unit consisting of 3 seats as a 2 tiered system made from Ply including 2 seat cushions.	W1289 x D953 x H800	£3,134	£3,240
	CAV 007 - L	A modular centre unit consisting of 9 seats as a 2 tiered system made from Ply including 3 seat cushions and high back.	W1200 x D1735 x H1800	£4,188	£4,400
	CAV 008 - L	A modular 45degree corner unit consisting of 6 seats as a 2 tiered system made from Ply including 3 seat cushions and high back.	W1829 x D1735 x H1800	£5,072	£4,068
	CAV 009 R - L	A right hand modular construction of steps for the 3 tiered system.	W825 x D1735 x H1800	£3,766	£0
	CAV 010 L - L	A left hand modular construction of steps for the 3 tiered system.	W825 x D1735 x H1800	£3,766	£0
	CAV 011 - L	A centre module construction of steps for the 3 tiered system.	W800 x D1735 x H1800	£3,370	£0
	CAV PL1 - L	A Large plan of the 3 tiered system including cente, 45 degree angles and steps allowing for 24-32 seats	W4413 x D4413 x H1800	£24,756	£26,768
	CAV PL2 - L	A Large plan of the 2 tiered L shaped tiered system including cente, 90 degree corner, centres and right hand unit.	W3440 x D2240 x H1800	£10,974	£11,402

CAVEA LAMINATED WITH ADDED STORAGE

	CAV 001 - LS	A Single unit consisting of 6 seats as a 2 tiered system made from Ply with upholstered corners and seat cushions.	W1200 x D1040 x H800	£3,186	£3,302
	CAV 002 R - LS	A modular right hand unit consisting of 6 seats as a 2 tiered system made from Ply with upholstered corners and seat cushions.	W1200 x D1040 x H800	£3,042	£3,154
	CAV 003 L - LS	A modular left hand unit consisting of 6 seats as a 2 tiered system made from Ply with upholstered corners and seat cushions.	W1200 x D1040 x H800	£3,042	£3,154
	CAV 004 - LS	A modular centre unit consisting of 6 seats as a 2 tiered system made from Ply including 2 seat cushions.	W1200 x D1040 x H800	£2,880	£2,880
	CAV 005 - LS	A modular corner unit consisting of 5 seats as a 2 tiered system made from Ply including 2 seat cushions.	W1040 x D1040 x H800	£3,736	£3,736
	CAV PL2 - LS	A Large plan of the 2 tiered L shaped tiered system including cente, 90 degree corner, centres and right hand unit.	W3440 x D2240 x H1800	£12,070	£12,540

CIRCA

Circa is a range full of curves, heights and colours. Using 3 standard shapes the DNA inspired design enables you to intertwine the pieces to create your own breakout, creative or tiered seating area.



Circa Seating Collection					
Product image	Code	Description	Dimensions mm	Band 1	Band 2
	CIR 1 L	A single seat modular 250h stool.	W 450 x D 450 x H 250	£244	£296
	CIR 1 M	A single seat modular 450h stool.	W 450 x D 450 x H 450	£302	£354
	CIR 1 H	A single seat modular 650h stool.	W 450 x D 450 x H 650	£362	£412
	CIR 12 L	A double seat modular 250h stool.	W 1100 x D 450 x H 250	£496	£562
	CIR 12 M	A double seat modular 450h stool.	W 1100 x D 450 x H 450	£646	£714
	CIR 12 H	A double seat modular 650h stool.	W 1100 x D 450 x H 650	£800	£882
	CIR 13 L	A triple seat modular 250h stool.	W 1750 x D 450 x H 250	£718	£800
	CIR 13 M	A triple seat modular 450h stool.	W 1750 x D 450 x H 450	£950	£1,074
	CIR 13 H	A triple seat modular 650h stool.	W 1750 x D 450 x H 650	£1,476	£1,296
	CIR 15 L	A five seater modular 250h stool.	W 3050 x D 450 x H 250	£1,148	£1,250
	CIR 15 M	A five seater modular 450h stool.	W 3050 x D 450 x H 450	£1,528	£1,732
	CIR 15 H	A five seater modular 650h stool.	W 3050 x D 450 x H 650	£1,914	£2,118
	CIR 3 L	A U-Shaped interlinking 250h stool.	W 1370 x D 910 x H 250	£824	£952
	CIR 3 M	A U-Shaped interlinking 450h stool.	W 1370 x D 910 x H 450	£956	£1,086
	CIR 3 H	A U-Shaped interlinking 650h stool.	W 1370 x D 910 x H 650	£1,208	£1,350
	CIR 3Y L	A Y-Shaped interlinking 250h stool.	W 1330 x D 1210 x H 250	£984	£1,164
	CIR 3Y M	A Y-Shaped interlinking 450h stool.	W 1330 x D 1210 x H 450	£1,154	£1,342
	CIR 3Y H	A Y-Shaped interlinking 650h stool.	W 1330 x D 1210 x H 650	£1,448	£1,646
	CIR 4 L	A four seater interlinking 250h stool.	W 1830 x D 910 x H 250	£1,038	£1,178
	CIR 4 M	A four seater interlinking 450h stool.	W 1830 x D 910 x H 450	£1,310	£1,452
	CIR 4 H	A four seater interlinking 650h stool.	W 1830 x D 910 x H 650	£1,672	£1,822

CIRCA



Circa Seating Collection					
Product image	Code	Description	Dimensions mm	Band 1	Band 2
	CIR 5 L	A five seater interlinking 250h stool.	W 2290 x D 910 x H 250	€1,406	€1,560
	CIR 5 M	A five seater interlinking 450h stool.	W 2290 x D 910 x H 450	€1,716	€1,868
	CIR 5 H	A five seater interlinking 650h stool.	W 2290 x D 910 x H 650	€2,172	€2,352
	CIR 6 L	A six seater interlinking 250h stool.	W 2750 x D 910 x H 250	€1,820	€1,988
	CIR 6 M	A six seater interlinking 450h stool.	W 2750 x D 910 x H 450	€2,430	€2,628
	CIR 6 H	A six seater interlinking 650h stool.	W 2750 x D 910 x H 650	€2,950	€3,250
	CIR 3 T	A nine seater interlinking tiered unit 650h.	W 1370 x D 1850 x H 650	€2,808	€3,210
	CIR 4 T	A twelve seater interlinking tiered unit 650h.	W 1820 x D 1850 x H 650	€3,822	€4,252
	CIR 5 T	A fifteen seater interlinking tiered unit 650h.	W 2290 x D 1850 x H 650	€4,998	€5,482
	CIR 6 T	An eighteen seater interlinking tiered unit 650h.	W 2750 x D 1850 x H 650	€6,802	€7,462
	CIR 3 YT	A Propeller shaped interlinking tiered unit 650h.	W 2090 x D 2090 x H 650	€3,396	€3,936



CLIMB

Climb is a brilliantly stylish product built for collaborating and enjoying the creative linkable shapes or floor plans created by 2020Furniture Design.

Being able to use the natural Ply Birch grain or many colored laminates shows how flexible this product can be, showing the beautiful cross layers to the core.

The Climb range uses Plywood which is a natural product made from renewable resources making it one of the most environmentally friendly decorative materials which also has an amazing strength. We also have an option on fabrics that are sustainable textiles for upholstery such as Hemp which is made from Wool and Hemp and Nettle Aztec made from Virgin Wool and harvested nettles.

The range just makes for a perfect collaborating area teasing you to make the Climb.



Product image	Code	Description	Dimensions mm	Band 1	Band 2
	CLI 001	A single modular unit with upholstered corners, seat cushion and ply to edges.	W 400 x D 400 x H 400	£672	£699
	CLI 002	A single modular unit with upholstered corners and ply to edges.	W 400 x D 400 x H 370	£634	£659
	CLI 003	A single tall modular unit with upholstered corners, seat cushion and ply to edges.	W 400 x D 400 x H 700	£932	£958
	CLI 004	A single tall modular unit with upholstered corners, and ply to edges.	W 400 x D 400 x H 670	£893	£918
	CLI 005	A double modular unit with upholstered corners, seat cushion and ply to edges.	W 800 x D 400 x H 400	£1,035	£1,073
	CLI 006	A double modular unit with upholstered corners and ply to edges.	W 800 x D 400 x H 370	£995	£1,023
	CLI 007	A double tall modular unit with upholstered corners, seat cushion and ply to edges.	W 800 x D 400 x H 700	£1,384	£1,436
	CLI 008	A double tall modular unit with upholstered corners, and ply to edges.	W 800 x D 400 x H 670	£1,346	£1,397
	CLI 009	A large modular unit with upholstered corners, half seat cushion and ply to edges.	W 800 x D 800 x H 400	£1,630	£1,682
	CLI 010	A large modular unit with upholstered corners, seat cushion and ply to edges.	W 800 x D 800 x H 400	£1,682	£1,733
	CLI 011	A large modular unit with upholstered corners and ply to edges.	W 800 x D 800 x H 370	£1,579	£1,630



CLIMB



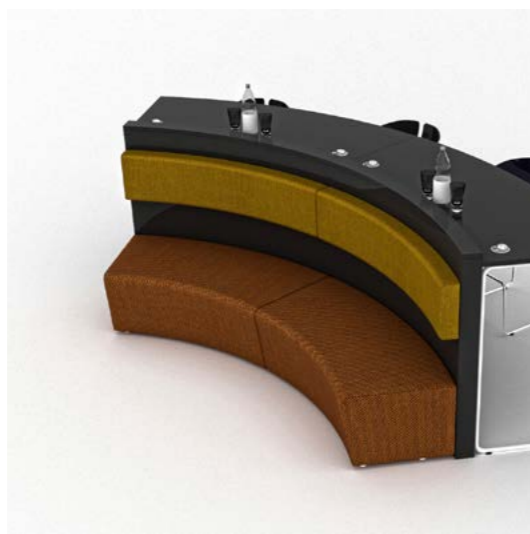
Climb Seating Collection - (Laminate Tops)					
Product image	Code	Description	Dimensions mm	Band 1	Band 2
	CLI 001 - L	A single modular unit with upholstered corners, seat cushion and ply to edges.	W 400 x D 400 x H 400	£773	£804
	CLI 002 - L	A single modular unit with upholstered corners and ply to edges.	W 400 x D 400 x H 370	£729	£760
	CLI 003 - L	A single tall modular unit with upholstered corners, seat cushion and ply to edges.	W 400 x D 400 x H 700	£1,071	£1,100
	CLI 004 - L	A single tall modular unit with upholstered corners, and ply to edges.	W 400 x D 400 x H 670	£1,027	£1,056
	CLI 005 - L	A double modular unit with upholstered corners, seat cushion and ply to edges.	W 800 x D 400 x H 400	£1,191	£1,235
	CLI 006 - L	A double modular unit with upholstered corners and ply to edges.	W 800 x D 400 x H 370	£1,147	£1,176
	CLI 007 - L	A double tall modular unit with upholstered corners, seat cushion and ply to edges.	W 800 x D 400 x H 700	£1,592	£1,659
	CLI 008 - L	A double tall modular unit with upholstered corners, and ply to edges.	W 800 x D 400 x H 670	£1,548	£1,607
	CLI 009 - L	A large modular unit with upholstered corners, half seat cushion and ply to edges.	W 800 x D 800 x H 400	£1,875	£1,934
	CLI 010 - L	A large modular unit with upholstered corners, seat cushion and ply to edges.	W 800 x D 800 x H 400	£1,934	£1,993
	CLI 011 - L	A large modular unit with upholstered corners and ply to edges.	W 800 x D 800 x H 370	£1,814	£1,928



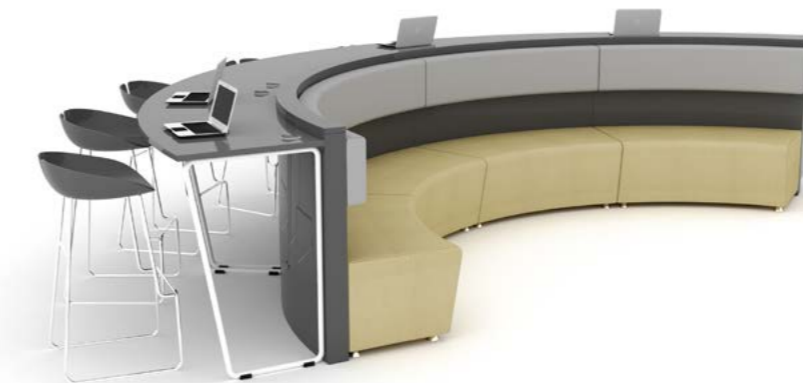
**TAKE A BREAK
FROM THE NORM**

CONFERENCE

The Conference range is built from laminated timber with added upholstered seats and tables which are able to link together offering many different configurations and finishes. We offer as standard two different floor plan layouts, although the Conference range can be very much made bespoke to fit any area or number of seats and use, which are all manufactured in house at our factory in St Neots. Options available would be straight and curved units, low, mid and high backs with the options of AC and USB ports.



Conference Seating Collection					
Product image	Code	Description	Dimensions mm	Band 1	Band 2
	CONF 1	A single, two seater modular unit with laminated back and seat.	W 1450 x D 770 x H 1150	€3,022	€3,036
	CONF 2	A single, two seater modular unit with upholstered back and seat.	W 1450 x D 770 x H 1150	€3,252	€3,276
	CONF 3	A single, two seater modular unit with upholstered back and seat with table.	W 1855 x D 1355 x H 1150	€3,774	€3,796
	CONF 4	A large conference unit consisting of 8 CON 3 units consisting of 32 seats.	W 7320 x D 5430 x H 1150	€27,814	€27,992
	CONF 5	A large conference unit consisting of 4 units and 20 seats.	W 7320 x D 5430 x H 1150	€27,814	€27,992



CONTOUR

Contour, is a comfortable range consisting of an armchair, two seater and three seater sofa. The armchair and sofa's are made with webbing and chunky seat foam to the seat and back. As standard the Contour range is available with timber legs which is very pleasing to the eye in any breakout area.



Contour Seating Collection					
Product image	Code	Description	Dimensions mm	Band 1	Band 2
	CONT 1	A single armchair with timber legs.	W 950 x D 850 x H 905	£1,166	£1,246
	CONT 2	A two seater with timber legs.	W 1600 x D 850 x H 905	£1,562	£1,696
	CONT 3	A three seater with timber legs.	W 2200 x D 850 x H 905	£1,830	£2,012



CREATOR

The name says it all with this Tetris style range of blocks, giving you almost endless possibilities to create the space you desire.

The units are chunky, comfortable and come in heights from 300mm to 1200mm and in square, rectangle and L-shaped pieces with the option of wrap around screen and media unit. This enables you to design modular sofas, corner units, tiered seating, presentation spaces and a whole lot more.



Creator Seating Collection					
Product image	Code	Description	Dimensions mm	Band 1	Band 2
	CRE01 300	A single seater modular 300h stool.	W 500 x D 500 x H 300	£242	£276
	CRE01 600	A single seater modular 600h stool.	W 500 x D 500 x H 600	£370	£418
	CRE01 900	A single seater modular 900h stool.	W 500 x D 500 x H 900	£498	£578
	CRE01 1200	A single seater modular 1200h stool.	W 500 x D 500 x H 1200	£530	£610
	CRE02 300	A double seat modular 300h stool.	W 1000 x D 500 x H 300	£422	£468
	CRE02 600	A double seat modular 600h stool.	W 1000 x D 500 x H 600	£552	£620
	CRE02 900	A double seat modular 900h stool.	W 1000 x D 500 x H 900	£746	£858
	CRE02 1200	A double seat modular 1200h stool.	W 1000 x D 500 x H 1200	£800	£912
	CRE03 300	A Large square seat 300h stool.	W 1000 x D 1000 x H 300	£552	£616
	CRE03 600	A Large square seat 600h stool.	W 1000 x D 1000 x H 600	£728	£810
	CRE03 900	A Large square seat 900h stool.	W 1000 x D 1000 x H 900	£978	£1,124
	CRE03 1200	A Large square seat 1200h stool.	W 1000 x D 1000 x H 1200	£1,088	£1,210
	CRE04 300	An L-Shaped interlinking 300h stool.	W 1000 x D 1000 x H 300	£552	£616
	CRE04 600	An L-Shaped interlinking 600h stool.	W 1000 x D 1000 x H 600	£728	£810
	CRE04 900	An L-Shaped interlinking 900h stool.	W 1000 x D 1000 x H 900	£978	£1,124
	CRE04 1200	An L-Shaped interlinking 1200h stool.	W 1000 x D 1000 x H 1200	£1,088	£1,210
	CRE05	A middle high privacy screen 500w.	W 500 x D 50 x H 1500	£642	£712
	CRE06	A middle high privacy screen 1000w.	W 1000 x D 50 x H 1500	£1,088	£1,212
	CRE07 CORNER	A Left corner interlinking high screen for privacy.	W 550 x D 550 x H 1500	£1,604	£1,786
	CRE08 CORNER	A Right corner interlinking high screen for privacy.	W 550 x D 550 x H 1500	£1,604	£1,786
	CRE09 END	A Left corner end high screen for privacy.	W 550 x D 550 x H 1500	£1,604	£1,786
	CRE10 END	A Right corner end high screen for privacy.	W 550 x D 550 x H 1500	£1,604	£1,786



CREATOR



Creator Seating Collection

Product image	Code	Description	Dimensions mm	Band 1	Band 2
	CRE P 01	A tiered seating plan consisting of 300 & 600 high stools sitting estimate 14.	W 4000 x D 1000 x H 600	€3,120	€3,462
	CRE P 02	A tiered seating plan consisting of 300, 600 and 900 high stools sitting estimate 25.	W 5000 x D 1500 x H 900	€6,252	€6,950
	CRE P 03	A tiered seating plan consisting of 300 & 600 high stools sitting estimate 30.	W 3000 x D 4000 x H 600	€7,012	€7,784
	CRE P 04	A tiered seating plan consisting of 300, 600 and 900 high stools sitting estimate 12 with privacy screens.	W 2100 x D 1550 x H 1500	€7,052	€7,836
	CRE P 05	A tiered seating plan consisting of 300, 600 and 900 high stools sitting estimate 12. With privacy screens.	W 2050 x D 2550 x H 1500	€8,316	€9,240
	CRE P 06	A tiered seating plan consisting of 300, 600 and 900 high stools sitting estimate 15. With privacy screens.	W 2600 x D 2050 x H 1500	€9,080	€10,090
	CRE P 07	A tiered seating plan consisting of 300, 600 and 900 high stools sitting estimate 18. With privacy screens.	W 4100 x D 1550 x H 1500	€11,746	€13,048
	CRE P 08	A tiered seating plan consisting of 300, 600, 900 and 1200 high stools sitting estimate 21. With privacy screens.	W 3100 x D 2550 x H 1500	€12,144	€13,492



FAITH

Faith is a range that offers comfort while working and relaxing using acoustic screen panels for small meetings, brief chats, taking a break and collaborating in tight areas.



Creator Seating Collection					
Product image	Code	Description	Dimensions mm	Band 1	Band 2
	FAI 01	A two seater face to face unit with metal base and screen.	W 2065 x D 760 x H 900	€4,652	€4,799
	FAI 02	A four seater with two face to face units with metal base and centre screen.	W 2065 x D 1460 x H 900	€8,835	€9,150
	FAI 03	A two seater face to face unit with high stool metal base with screen.	W 2065 x D 760 x H 1250	€4,872	€5,019
	FAI 04	A four seater with two face to face units with high stool metal base and centre screen.	W 2065 x D 1460 x H 1250	€9,255	€9,570

HAZZY

With a chunky seat making Hazy extremely comfortable, this modular sofa range is great for reception, breakout and lounge areas. Available with or without arms you can configure Hazy as a continuous sofa, as an L or U shape or to meet your individual requirements.

Hazy is also available with a matching table and the options of A/C or USB



Hazy Seating Collection					
Product image	Code	Description	Dimensions mm	Band 1	Band 2
	HAZ 01	A comfy single seat with tubular under-frame.	W 800 x D 800 x H 440	£590	£610
	HAZ 02	A comfy single seat with back and tubular under-frame.	W 800 x D 800 x H 740	£734	£768
	HAZ 03 L	A comfy left hand single seat with back, arm and tubular under-frame.	W 800 x D 800 x H 740	£852	£890
	HAZ 03 R	A comfy right hand single seat with back, arm and tubular under-frame.	W 800 x D 800 x H 740	£852	£890
	HAZ 04 T	A laminated table top with tubular under-frame.	W 800 x D 800 x H 315	£546	£0



LINCS

With its chunky overfilled deep design Lincs lets you bring comfort into your office, leisure or education environment.

Available with or without backs and arms Lincs allows you to configure it to create enticing, relaxing breakout spaces that users will keep coming back to.



Lincs Seating Collection					
Product image	Code	Description	Dimensions mm	Band 1	Band 2
	LIN 01	A single seater modular stool.	W 800 x D 800 x H 410	£657	£689
	LIN 02	A single seater modular seat with back.	W 800 x D 800 x H 710	£878	£943
	LIN 03	A single seater modular seat with back and left arm.	W 1000 x D 800 x H 710	£1,197	£1,260
	LIN 04	A single seater modular seat with back and right arm.	W 1000 x D 800 x H 710	£1,197	£1,260
	LIN 05	A large seat modular stool.	W 1000 x D 800 x H 410	£861	£911
	LIN 06	A two seater modular stool.	W 1200 x D 800 x H 410	£928	£991
	LIN 07	A two seater modular seat with back.	W 1200 x D 800 x H 710	£1,222	£1,376
	LIN 08	A two seater modular seat with back and left arm.	W 1400 x D 800 x H 710	£1,518	£1,628
	LIN 09	A two seater modular seat with back and right arm.	W 1400 x D 800 x H 710	£1,518	£1,628
	LIN 10	A single seat corner unit.	W 800 x D 800 x H 710	£1,056	£1,069
	LIN 20	A single seater armchair.	W 1000 x D 800 x H 710	£1,443	£1,638
	LIN 21	A two seater sofa.	W 1600 x D 800 x H 710	£1,884	£2,163
	LIN 22	A three seater sofa.	W 2200 x D 800 x H 710	£2,184	£2,505



MAST

Our mast range has a unique contemporary style. Available in three different back heights the unique style of the shadow gaps within the range enhance your modern space whether it be for collaborating, learning or meeting and eating. Available with power modules and bespoke lengths to fit any room size.



Mast Seating Collection					
Product image	Code	Description	Dimensions mm	Band 1	Band 2
	MAS 1	A two seater singular bench seat with laminated kick board. Useful for a linear run or end of booth.	W 1200 x D 760 x H 950	€1,452	€1,514
	MAS 2	A two seater singular bench seat with laminated kick board and medium height back. Useful for a linear run or end of booth.	W 1200 x D 760 x H 1200	€1,608	€1,670
	MAS 3	A two seater singular bench seat with laminated kick board and high height back. Useful for a linear run or end of booth.	W 1200 x D 760 x H 1400	€1,762	€1,824
	MAS 4	A two seater double bench seat with laminated kick board. Back to back seating.	W 1200 x D 1450 x H 1430	€3,152	€3,216
	MAS 5	A two seater double bench seat with laminated kick board. With medium height back to back seating.	W 1200 x D 1450 x H 1230	€2,844	€2,906
	MAS 6	A two seater double bench seat with laminated kick board. With a high height back to back seating.	W 1200 x D 1450 x H 980	€2,536	€2,598

*Bespoke sizes available.



MILO

Milo's modular construction allows you to customize it to suit your space effortlessly. Its low-profile seating encourages a more laid-back, comfortable sitting position, helping to ease pressure on your back and legs. The reduced height creates a sense of stability and relaxation, making it ideal for unwinding. With its clean lines and flexible form, Milo blends comfort with quiet sophistication, making it a great choice for everything from casual lounging to informal gatherings.



Milo Seating Collection					
Product image	Code	Description	Dimensions mm	Band 1	Band 2
	MIL 01	An Comfortable Single Arm Chair with Loose Cushions and Timber legs.	W 1095 x D 800 x H 780	£992	£1,056
	MIL 02	An Comfortable Two Seater Sofa with Loose Cushions and Timber legs.	W 1715 x D 800 x H 780	£1,624	£1,728
	MIL 03	An Comfortable Three Seater Sofa with Loose Cushions and Timber legs.	W 2335 x D 800 x H 780	£2,150	£2,288
	MIL 04	A Comfortable Single Seater Modular Unit with Loose Cushion and Timber legs.	W 620 x D 800 x H 780	£674	£718
	MIL 05	A Comfortable Two Seater Modular Unit with Loose Cushions and Timber legs.	W 1240 x D 800 x H 780	£1,124	£1,196
	MIL 06	A Comfortable Two Seater Left Hand Modular Unit with Loose Cushions and Timber legs.	W 1480 x D 800 x H 780	£1,386	£1,474
	MIL 07	A Comfortable Two Seater Right Hand Modular Unit with Loose Cushions and Timber legs.	W 1480 x D 800 x H 780	£1,386	£1,474
	MIL 08	A Comfortable Three Seater Modular Unit with Loose Cushions and Timber legs.	W 1860 x D 800 x H 780	£1,644	£1,748
	MIL 09	A Comfortable Three Seater Left Hand Modular Unit with Loose Cushions and Timber legs.	W 2100 x D 800 x H 780	£1,954	£2,078
	MIL 10	A Comfortable Three Seater Right Hand Modular Unit with Loose Cushions and Timber legs.	W 2100 x D 800 x H 780	£1,954	£2,078
	MIL 11	A Comfortable Single Seater Modular Corner Unit with Loose Cushion and Timber legs.	W 800 x D 800 x H 780	£976	£1,038



MINTAY

Featuring a dynamic, fresh design Mintay is the perfect range for the modern learning and workplace environment. The modular sofa range is available with low, medium or high back, all with its unique 'U' shaped arm creating great flexibility. If you want to create a little privacy Mintay is also available with a side option, roof option and in booth form, with the option for A/C or USB ports, making it perfect for breakout, workspace, meeting and presentation areas.



Mintay Seating Collection					
Product image	Code	Description	Dimensions mm	Band 1	Band 2
	MIN 01	A single modular unit for 1 person with.	W 600 x D 718 x H 705	£736	£764
	MIN 02	A single left hand unit created to sit at the end of a run.	W 650 x D 718 x H 705	£882	£920
	MIN 03	A single right hand unit created to sit at the end of a run.	W 650 x D 718 x H 705	£882	£920
	MIN 04	A single seater armchair with low back also available with arms down to the floor to hide wires from power units.	W 700 x D 718 x H 705	£1,058	£1,104
	MIN 05	A single seater modular unit with medium high back created for sitting between a left and right handed units. Also use full for a run of seating.	W 600 x D 718 x H 1055	£800	£874
	MIN 06	A single seater armchair with medium back. Options of two different acoustic arms for privacy.	W 700 x D 718 x H 1055	£1,154	£1,236
	MIN 07	A single seater high back armchair with medium back. Options of two different acoustic arms for privacy.	W 700 x D 768 x H 1510	£1,490	£1,610
	MIN 08	A two seater sofa low back sofa.	W 1200 x D 718 x H 705	£1,058	£1,116
	MIN 09	A two seater sofa with low back also available with arms down to the floor to hide wires from power units.	W 1300 x D 718 x H 705	£1,366	£1,440
	MIN 10	A two seater sofa with medium back. Options of two different acoustic arms for privacy.	W 1300 x D 718 x H 1055	£1,684	£1,786
	MIN 11	A two seater sofa with high back and hood. Options of two different acoustic arms for privacy.	W 600 x D 718 x H 1510	£2,402	£2,588
	MIN 12	A two seater high back booth with hood and table. Options of two different acoustic arms for privacy.	W 2235 x D 700 x H 1525	£3,576	£3,858
	MIN 13	A four seater high back booth with roof and table. Options of two different acoustic arms for privacy.	W 2235 x D 1300 x H 1525	£6,346	£6,754
	MIN 14	A two seater high back booth with roof and table. Options of two different acoustic arms for privacy.	W 2235 x D 700 x H 1820	£4,322	£4,664
	MIN 15	A four seater high back booth with roof and table. Options of two different acoustic arms for privacy.	W 2235 x D 1300 x H 1820	£7,348	£7,870
	MIN 16	A six seater high back booth with hood and table. Options of two different acoustic arms for privacy.	W 2235 x D 1900 x H 1525	£7,964	£8,488


*Booth pricing includes standard pole leg and MFC table top.



MONO

The MONO Pod is designed to bring affordability, flexibility, and a sense of well-being to modern workspaces. Customisable with a wide range of fabrics and Standard MFC finishes, it adds warmth, colour, and texture—helping to create an uplifting environment where users can focus, recharge, or take calls in comfort. Whether placed in a busy office or a home study area, the pod contributes to a calmer, more productive space.



Mono Pod					
Product image	Code	Description	Dimensions mm	Band 1	Band 2
	MON 01	A Phone Pod with MFC surround, Upholstered Inner with option for timber bottom half. Poseur height table, lighting, Air Circulation with a PIR Sensor.	W 1100 x D 900 x H 2235	£5,172	£5,388

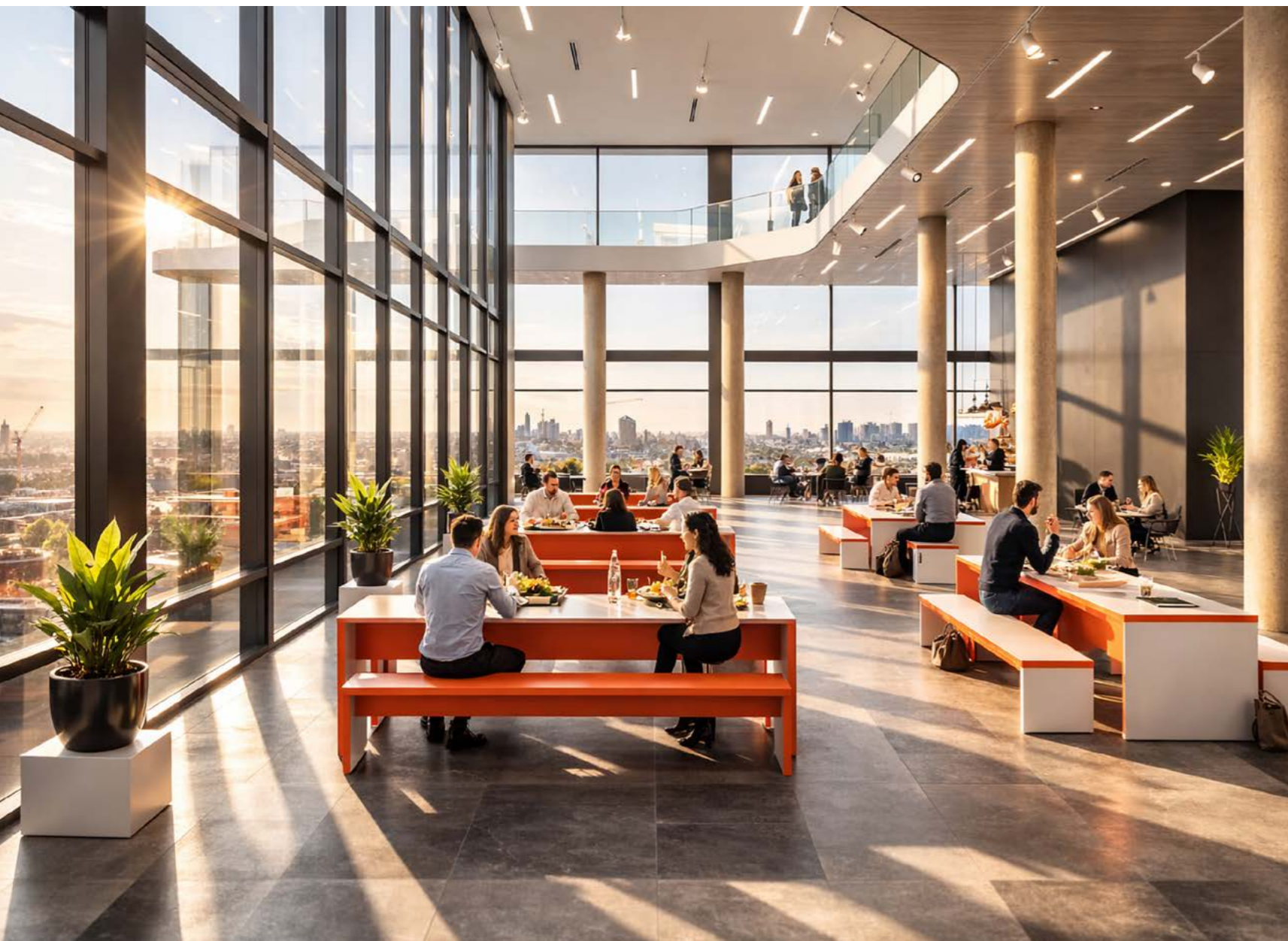
- *Spot Light & Air Circulations Included with PIR Sensor.
- *Black or White Door Frame as standard.
- *Option to have a low Working Table and Soft seating.
- *Options of different outer panels from our std collection of MFC.
- *Power Module Available (1 x UK Power and A + C Smart Charge) add £90nett.
- *Option of Upholstered Outer Panels Price On Application.
- *Option to have accoustic glass £160 nett.



SPECILISTS IN BREAK
OUT SPACES

MOR

With its vast array of laminate colour options and sizes Mor enables you to create the breakout or dining environment to meet your needs. Available from 1600mm to 2400mm wide, 730 dining height and with a panelled end as standard. Mor can also be manufactured in 1100mm poseur height and with a metal O frame to suit any project. Power modules can also be combined to ensure you stay connected during your breakout session, lunch or informal meeting.



Mor Seating & Table Collection					
Product image	Code	Description	Dimensions mm	MFC	Laminate
	MOR 1	A table and 2 bench set offering 36mm thick legs and tops.	W 1600 x D 1320 x H 755	£1,366	£2,010
	MOR 2	A table and 2 bench set offering 36mm thick legs and tops.	W 2000 x D 1320 x H 755	£1,544	£2,270
	MOR 3	A table and 2 bench set offering 36mm thick legs and tops.	W 2400 x D 1320 x H 755	£1,808	£2,660
	MOR 4	Table only offering 36mm thick legs and tops.	W 1600 x D 700 x H 755	£794	£1,168
	MOR 5	Table only offering 36mm thick legs and tops.	W 2000 x D 700 x H 755	£948	£1,392
	MOR 6	Table only offering 36mm thick legs and tops.	W 2400 x D 700 x H 755	£1,102	£1,620
	MOR 7	Poseur height table only offering 36mm thick legs and tops.	W 1600 x D 700 x H 1050	£1,014	£1,490
	MOR 8	Poseur height table only offering 36mm thick legs and tops.	W 2000 x D 700 x H 1050	£1,168	£1,718
	MOR 9	Poseur height table only offering 36mm thick legs and tops.	W 2400 x D 700 x H 1050	£1,322	£1,944



MOR

A version of our MOR range but instead of using MFC sides we have a 35mm Metal frame for a lighter product. The metal frame is available in many RAL colours and MFC tops available with poseur height frames.



Mor Seating & Table Collection					
Product image	Code	Description	Dimensions mm	MFC	Laminate
	MOR 10	Metal frame table and 2 bench set offering 36mm thick top	W 1600 x D 1320 x H 755	£1,168	£1,718
	MOR 11	Metal frame table and 2 bench set offering 36mm thick top	W 2000 x D 1320 x H 755	£1,318	£1,938
	MOR 12	Metal frame table and 2 bench set offering 36mm thick top	W 2400 x D 1320 x H 755	£1,546	£2,272
	MOR 13	Metal frame table only offering 36mm thick top	W 1600 x D 700 x H 755	£678	£998
	MOR 14	Metal frame table only offering 36mm thick top	W 2000 x D 700 x H 755	£812	£1,192
	MOR 15	Metal frame table only offering 36mm thick top	W 2400 x D 700 x H 755	£944	£1,386
	MOR 16	Metal frame poseur height Table only offering 36mm and top	W 1600 x D 700 x H 1050	£866	£1,274
	MOR 17	Metal frame poseur height Table only offering 36mm and top	W 2000 x D 700 x H 1050	£998	£1,468
	MOR 18	Metal frame poseur height Table only offering 36mm and top	W 2400 x D 700 x H 1050	£1,130	£1,662



MUDA

Muda is a small family of natural looking stools in the shape of an organic, smooth stone with a soft feel. Consisting of a small, medium and large stools with and without backs, plus a low table for working on laptops or taking a break.



Muda Seating Collection					
Product image	Code	Description	Dimensions mm	Band 1	Band 2
	MUD 01	A single upholstered stool.	W 933 x D 645 x H 410	€644	€668
	MUD 02	A single upholstered stool with back.	W 933 x D 730 x H 760	€1,000	€1,050
	MUD 03	A single large upholstered stool.	W 1535 x D 1245 x H 410	€896	€930
	MUD 04	A single large upholstered stool with back.	W 1535 x D 1245 x H 710	€918	€976
	MUD 05 T	A single low table with 25mm MFC top	W 845 x D 555 x H 440	€635	€0
	MUD 06	A single upholstered stool.	W 730 x D 500 x H 410	€524	€548
	MUD 07 T	A single table to slide underneath Muda or other furniture	W 510 x D 320 x H 690	€430	€0



N-ALLY

Whether you are looking to create some landscape seating, a meeting booth, acoustic screens, a breakout seating area or a statement flowing piece then N-Ally does it all. Available in both curved and straight formats, with low, mid and high backs and with laminated or upholstered finish with the option of A/C and USB ports.



N-Ally Seating Collection					
Product image	Code	Description	Dimensions mm	Band 1	Band 2
	NAL 01	A single seater stool.	W 600 x D 595 x H 440	£288	£312
	NAL 02	A two seater stool.	W 1200 x D 595 x H 440	£522	£564
	NAL 03	A three seater stool.	W 1800 x D 595 x H 440	£796	£864
	NAL 04	A 90 degree curved stool.	W 1045 x D 1045 x H 440	£986	£1,036
	NAL 05	A single seat modular chair.	W 600 x D 730 x H 790	£594	£652
	NAL 06	A two seater modular chair.	W 1200 x D 730 x H 790	£854	£926
	NAL 07	A three seater modular chair.	W 1800 x D 730 x H 790	£1,230	£1,334
	NAL 08	A single seat modular chair with arms.	W 840 x D 760 x H 790	£1,006	£1,092
	NAL 09	A two seater modular sofa with arms.	W 1440 x D 760 x H 790	£1,308	£1,418
	NAL 10	A three seater modular sofa with arms.	W 1440 x D 760 x H 790	£1,618	£1,730
	NAL 11	A single seater high back chair with arms.	W 810 x D 930 x H 1555	£1,716	£1,092
	NAL 12	A two seater high back sofa with arms.	W 1410 x D 930 x H 1555	£2,124	£2,360
	NAL 13	A three seater high back sofa with arms.	W 2010 x D 930 x H 1555	£2,538	£2,772
	NAL 14	A single seater armchair.	W 1105 x D 825 x H 790	£1,006	£1,092
	NAL 15	A two seater sofa.	W 1811 x D 825 x H 790	£1,308	£1,418
	NAL 16	A three seater sofa.	W 2410 x D 825 x H 790	£1,618	£1,730

*Booth pricing includes standard pole leg and MFC table top.



N-ALLY



N-Ally Seating Collection

Product image	Code	Description	Dimensions mm	Band 1	Band 2
	NAL 17	A single seater armchair with high back.	W 1125 x D 835 x H 1460	£2,130	£2,336
	NAL 18	A two seater sofa with high back.	W 1830 x D 835 x H 1460	£2,634	£2,898
	NAL 19	A three seat modular high back sofa.	W 2430 x D 835 x H 1460	£3,146	£3,402
	NAL 20	A 2 person low back booth.	W 2400 x D 1105 x H 790	£3,830	£4,118
	NAL 21	A 4 person low back booth.	W 2400 x D 1810 x H 790	£4,738	£5,107
	NAL 22	A 6 person low back booth	W 2400 x D 2410 x H 790	£5,653	£6,000
	NAL 23	A 2 person high back booth	W 2420 x D 1125 x H 1460	£6,384	£6,865
	NAL 24	A 4 person high back booth	W 2420 x D 1830 x H 1460	£7,898	£8,516
	NAL 25	A 6 person high back booth	W 2420 x D 2430 x H 1460	£9,427	£10,000
	NAL 26	A 90 degree curved corner unit.	W 1180 x D 1180 x H 790	£1,124	£1,236
	NAL 27	A 90 degree curved corner unit with high back.	W 1190 x D 1190 x H 1460	£1,914	£2,138
	NAL 28	A square corner unit.	W 800 x D 800 x H 790	£890	£982
	NAL 29	A square corner unit with high back.	W 810 x D 810 x H 1460	£1,516	£1,700
	NAL 30	A 135 degree 2 seater unit.	W 1070 x D 1340 x H 790	£1,124	£1,236
	NAL 31	A 135 degree 2 seater unit with high back.	W 1080 x D 1345 x H 1460	£1,908	£2,100
	NAL 32	A Y shape 4 seater seating unit.	W 1880 x D 2030 x H 790	£1,678	£1,830
	NAL 33	A Y shape 4 seater seating unit with high back.	W 1885 x D 2030 x H 1460	£2,636	£2,900
	NAL 34	A high back circular booth.	W 2380 x D 2380 x H 1460	£5,458	£6,096
	NAL 35	Centre media back and wall.	W 750 x D 210 x H 1460	£1,022	£1,096
	NAL 36	A linear unit with 120 degree angle with back	W 1650 x D 1320 x H 790	£1,624	£1,736
	NAL 37	A Single wrap around high chair with table to the left.	W 1125 x D 1320 x H 1640	£2,472	£2,610
	NAL 38	A Single wrap around high chair with table to the right.	W 1125 x D 1320 x H 1640	£2,472	£2,610

*Booth pricing includes standard pole leg and MFC table top.

PIC N MIX

Looking for a simpler shaped stool then Pic 'n' Mix is for you. It comprises circle, square and hexagon shapes available as a stool or as a table. These are great for providing flexible seating alongside tables or other seating areas.



Pic N Mix Seating Collection					
Product image	Code	Description	Dimensions mm	Band 1	Band 2
	PIC 1	A single seat circular 400h stool.	W 450 x D 450 x H 400	£250	£294
	PIC 2	A single seat hexagon 400h stool.	W 480 x D 450 x H 400	£374	£431
	PIC 3	A single seat square 400h stool.	W 450 x D 450 x H 400	£250	£294
	PIC 1T	A single seat circular 400h MFC table.	W 450 x D 450 x H 400	£376	£420
	PIC 2T	A single seat hexagon 400h MFC table.	W 480 x D 450 x H 400	£552	£609
	PIC 3T	A single seat square 400h MFC table.	W 450 x D 450 x H 400	£376	£420

***Also available on Castors, POA**



RIFT

Rift is a brand new design created at 2020 Furniture Design by our in house design team. The Rift has been designed as a light booth created with light tubular frame which has many configurable options of different materials that stand out and enhance any breakout area in the Office, Education or Leisure environments.



Pic N Mix Seating Collection					
Product image	Code	Description	Dimensions mm	Band 1	Band 2
	RIF 01	A single seating booth with seat and table, with no panels or ceiling rails as standard.	W 990 x D 880 x H 2000	£4,256	£4,344
	RIF 02	A four seater booth with face to face seating and table with no panels or ceiling rails as standard.	W 2100 x D 1350 x H 2000	£5,314	£5,490
	RIF 03	A two seater booth with seating, table and media wall with no panels or ceiling rails as standard.	W 2100 x D 1350 x H 2000	£6,196	£6,372
	RIF 04	A four seater booth with face to face high stool seating and table with no panels or ceiling rails as standard.	W 2100 x D 1350 x H 2000	£6,196	£6,372
	RIF 05	A two seater booth with high stool seating, table and media wall with no panels or ceiling rails as standard.	W 2100 x D 1350 x H 2000	£7,298	£7,034

OPTIONS

- | | | |
|-------------------------------|------|------|
| 1. Timber Ceiling Rails Small | £POA | |
| 2. Timber Ceiling Rails Large | £POA | |
| 3. Lighting to the ceiling. | £POA | |
| 4. Modular Power unit. | £POA | |
| 5. MFC Large Panels | £POA | |
| 6. MFC Medium Panels | £POA | |
| 7. MFC Small Panels | £POA | |
| 8. Upholstered Large Panels | £POA | £POA |
| 9. Upholstered Medium Panels | £POA | £POA |
| 10. Upholstered Small Panels | £POA | £POA |



RIPPLE

If you are looking for high usage seating or dining areas then look no further than Ripple. With a strong structure and high laminated screens it is designed to withstand even the most demanding of education and commercial environments. A padded seat and 'Ripple' back make this range both comfortable as well as practical and sturdy. Whether you are looking to create back to back seating booths, perimeter dining areas or a sweeping S formation then Ripple can be configured to meet the demands of your project.



Ripple Seating Collection					
Product image	Code	Description	Dimensions mm	Band 1	Band 2
	RIP 1	A single 4 seater booth with table.	W 2045 x D 1340 x H 1480	£8,035	£8,093
	RIP 2	Two 4 seater booths with tables.	W 4030 x D 1340 x H 1480	£11,617	£11,737
	RIP 3	Triple 4 seater booths with tables.	W 6015 x D 1340 x H 1480	£15,372	£15,551
	RIP 4	Quadruple 4 seater booths with tables.	W 8000 x D 1340 x H 1480	£19,125	£19,360
	RIP 1 ST	A single 2 seater run of seating with table.	W 1340 x D 1375 x H 1480	£4,656	£4,956
	RIP 2 ST	A double 4 seater run of seating with table.	W 2630 x D 1375 x H 1480	£8,705	£8,763
	RIP 3 ST	A triple 6 seater run of seating with table.	W 3920 x D 1375 x H 1480	£12,550	£12,638
	RIP 1 BB	A double back to back 4 seater.	W 1340 x D 1300 x H 968	£2,400	£2,415

*Includes MFC table tops with pedestal leg.



SALOON

Our Saloon range of wing back armchairs and sofas combine contemporary styling with a traditional feel. For a more relaxed feel we offer a high back which also adds a more private feeling. Saloon is perfect for reception areas, breakout, dining or lounge space and is available with the option of A/C and USB ports.



Saloon Seating Collection					
Product image	Code	Description	Dimensions mm	Band 1	Band 2
	SAL 01	A single seater high back armchair with wooden legs.	W 660 x D 650 x H 1260	£1,314	£1,414
	SAL 02	A two seater high back sofa with wooden legs.	W 1340 x D 650 x H 1260	£1,822	£1,968
	SAL 03	A single seater Low back armchair with wooden legs.	W 660 x D 650 x H 790	£1,092	£1,150
	SAL 04	A two seater Low back sofa with wooden legs.	W 1340 x D 650 x H 790	£1,520	£1,968



SESSION

Session is a modern range that works for office, education and leisure, collaborating with an aesthetically pleasing design for meetings with friends and work colleagues. With plenty of options from roof styles, power and lighting the Session is a very stylish and modern pod.



Session Booth Collection with MFC Surround					
Product image	Code	Description	Dimensions mm	Band 1	Band 2
	SES 01	A two seater booth with flat roof with table, upholstered seat, back and pads.	W 2060 x D 750 x H 2000	€6,546	€6,800
	SES 02	A four seater booth with flat roof with table, upholstered seat, back and pads.	W 2060 x D 1400 x H 2000	€9,656	€10,072
	SES 03	A two seater booth with flat roof with table, upholstered seat, back and pads, with floor.	W 2060 x D 750 x H 2000	€6,080	€6,306
	SES 04	A four seater booth with flat roof with table, upholstered seat, back and pads, with floor.	W 2060 x D 1350 x H 2000	€9,076	€9,478
	SES 05	A two seater booth with pitched roof with table, upholstered seat, back and pads.	W 2060 x D 750 x H 2215	€8,568	€8,822
	SES 06	A four seater booth with pitched roof with table, upholstered seat, back and pads.	W 2060 x D 1400 x H 2215	€11,982	€12,362
	SES 07	A two seater booth with pitched roof with table, upholstered seat, back and pads, with floor.	W 2060 x D 750 x H 2215	€7,332	€7,558
	SES 08	A four seater booth with pitched roof with table, upholstered seat, back and pads, with floor.	W 2060 x D 1400 x H 2215	€11,336	€11,678
	SES 09	A two seater booth with open top with table, upholstered seat, back and pads.	W 2060 x D 750 x H 1920	€5,104	€5,284
	SES 10	A four seater booth with open top with table, upholstered seat, back and pads.	W 2060 x D 1400 x H 1920	€8,138	€8,518
	SES 11	A single seater phone booth with flat roof with table, upholstered seat, back and pads.	W 1100 x D 750 x H 2000	€4,852	€5,030
	SES 12	A six seater booth with pitched roof with table, upholstered seat, back and pads.	W 2060 x D 2100 x H 2215	€14,622	€15,142

*All booths have an option for light POA.

* Power Module 2 x UK Power and A/C Smart -Charge £100 nett.

* Tv bracket and cable management add £75 nett.



SESSION GLASS

Introducing the Session Range: the perfect blend of functionality and style for any workspace. Featuring a sleek glass front door with magnetic suction, our booths are designed to optimize acoustics, ensuring a quiet and productive environment. Each Session Glass booth is equipped with a lighting system controlled by a PIR sensor, an air circulation unit, and optional power supply, providing the utmost comfort and convenience. Available in a variety of vibrant colours for both the surrounds and doors, the Session Range allows you to customize your space to match your aesthetic preferences.



Session Glass Pod Door Collection with MFC Surround					
Product image	Code	Description	Dimensions mm	Band 1	Band 2
	SES 01 G	A two seater booth with Glass door, flat roof with table, upholstered seat, back and pads. Includes lighting, air circulation and PIR Sensor.	W 2060 x D 900 x H 2000	€9,998	€10,228
	SES 02 G	A four seater booth with Glass door, with table, upholstered seat, back and pads. Includes lighting, air circulation and PIR Sensor.	W 2060 x D 1450 x H 2000	€12,838	€13,222
	SES 05 G	A two seater booth with Glass door pitched roof with table, upholstered seat, back and pads. Includes lighting, air circulation and PIR Sensor.	W 2060 x D 900 x H 2215	€12,450	€12,886
	SES 06 G	A four seater booth with Glass door, pitched roof with table, upholstered seat, back and pads. Includes lighting, air circulation and PIR Sensor.	W 2060 x D 1450 x H 2215	€15,772	€16,120
	SES 11 G	A single seater phone booth with Glass door, flat roof with table, upholstered seat, back and pads. Includes lighting, air circulation and PIR Sensor.	W 1100 x D 900 x H 2000	€7,442	€7,602
	SES 15 G	A Room with Upholstered pads to 3 walls and glass front door. Including a Table. Suitable for wheelchair access.	W 2600 x D 2700 x H 2200	€19,148	€19,946

Session Glass Pod Door Collection with Upholstered Surround					
Product image	Code	Description	Dimensions mm	Band 1	Band 2
	SES 01 U - G	A two seater booth with upholstered exterior, Glass door, flat roof with table, upholstered seat, back and pads. Includes lighting, air circulation and PIR Sensor.	W 2060 x D 900 x H 2000	€10,414	€10,654
	SES 02 U - G	A four seater booth with upholstered exterior, Glass door, flat roof with table, upholstered seat, back and pads. Includes lighting, air circulation and PIR Sensor.	W 2060 x D 1450 x H 2000	€13,374	€13,772
	SES 05 U - G	A two seater booth with upholstered exterior, Glass door pitched roof with table, upholstered seat, back and pads. Includes lighting, air circulation and PIR Sensor.	W 2060 x D 900 x H 2215	€12,970	€13,420
	SES 06 U - G	A four seater booth with upholstered exterior, Glass door, pitched roof with table, upholstered seat, back and pads. Includes lighting, air circulation and PIR.	W 2060 x D 1450 x H 2215	€16,430	€16,792
	SES 11 U - G	A single seater phone booth with upholstered exterior, Glass door, flat roof with table, upholstered seat, back and pads. Includes lighting, air circulation and PIR.	W 1100 x D 900 x H 2000	€7,750	€7,918
	SES 15 U - G	A Room with Upholstered pads to 3 walls and glass front door. Including a Table. Suitable for wheelchair access.	W 2600 x D 2700 x H 2200	€19,946	€20,776

*Pods need to have 100mm Clearance from ceiling or Bulk head

*Standing Phone Pod will be 2200mm High.

*Pricing includes Lighting & Air circulation with PIR Sensor to Glass door Pods.

* Power Module 2 x UK Power and A/C Smart -Charge £100 nett.

* Tv bracket and cable management add £75 nett.

*All Session Booths have an option of glass wall to the back of the booth POA.

*All Session enclosed Pods meet standard industry acoustic levels of 36 decibels.



SOLUS

The Solus range is a captivating collection of pods and booths, crafted to bring elegance and productivity into any workspace. Each pod and booth is equipped with soft, inviting curves and upholstered interiors and exteriors, making a bold design statement. The interior features comfortable, upholstered seating with a supportive back and a robust MFC table, perfect for focused tasks and meetings alike.

Adding to its appeal, each Solus pod with glass doors is fitted with built-in lighting, air circulation, and a PIR sensor, ensuring a comfortable, well-ventilated environment. With an impressive 36dB sound rating, the pods provide an effective barrier against external noise, creating a peaceful, distraction-free zone ideal for focused work.



SOLUS Pod Collection					
Product image	Code	Description	Dimensions mm	Band 1	Band 2
	SOL 001	An empty single pod.	W 1360 x D 1200 x H 2250	£10,656	£10,980
	SOL 001 - BR	A single pod with angled back rest.	W 1360 x D 1200 x H 2250	£11,194	£11,518
	SOL 001 - SP	A single pod with seating, arm and table.	W 1360 x D 1200 x H 2250	£12,876	£13,208
	SOL 002	An empty single pod.	W 1360 x D 1200 x H 2250	£10,656	£10,980
	SOL 002 - SP	A single pod with seating, arm and table.	W 1360 x D 1200 x H 2250	£12,876	£13,208
	SOL 003 - 1400	A single office pod with a desk.	W 1400 x D 2170 x H 2250	£15,380	£15,866
	SOL 003 - 1600	A single office pod with desk.	W 1600 x D 2170 x H 2250	£16,740	£17,226
	SOL 004 - 4	A four seater office pod with table and seating. With glass door and walls.	W 2465 x D 1775 x H 2250	£17,396	£17,624
	SOL 005 - 2	A two seater office pod with table and seating. With glass door and walls.	W 2465 x D 1072 x H 2250	£15,192	£15,418
	SOL 006 - 4	A four seater office pod with table and seating. Without glass and door.	W 2465 x D 1775 x H 2250	£12,986	£13,214
	SOL 007 - 2	A two seater office pod with table and seating. Without glass and door.	W 2465 x D 1072 x H 2250	£11,840	£12,104

- *Pricing includes Lighting & Air circulation with PIR Sensor to Glass door Pods.
- * Power Module 2 x UK Power and A/C Smart -Charge £100 nett.
- * Tv bracket and cable management add £75 nett.
- *All Solus Booths as standard have a glass wall to the back of the booths.
- *All Solus enclosed Pods meet standard industry acoustic levels of 36 decibels.
- *Upholstered back panel (not glass) on SOL001 & SOL002. Deduct £400 from RRP
- *Upholstered back panel (not glass) on SOL003. Deduct £800 from RRP
- *Upholstered back panel (not glass) on SOL004 & SOL005. Deduct £1000 from RRP



STREAM

Our entry level soft seating range Stream is as easy on the eye as it is on your budget strings. With booths, benches, sofa's and chairs all working together in unison. This great little range enables you to configure it to meet the demands of every project.

Also available in 2, 4 and 6 person booths to give you some informal breakout meeting space and is available with wooden or chrome legs as standard and the option to add power and connectivity.



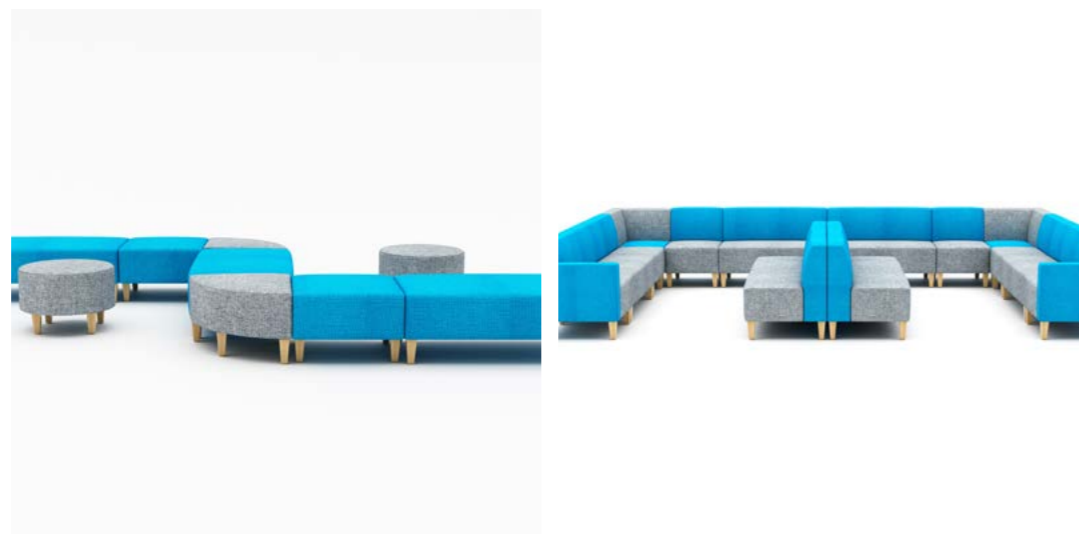
Stream Seating Collection					
Product image	Code	Description	Dimensions mm	Band 1	Band 2
	STE 01	A single seat square modular stool available with timber or metal legs.	W 600 x D 700 x H 450	£300	£328
	STE 02	A single seat round modular stool available with timber or metal legs.	W 700 x D 700 x H 450	£300	£328
	STE 03	A single seat triangular modular stool available with timber or metal legs.	W 700 x D 700 x H 450	£309	£344
	STE 04	A two seat rectangle modular stool available with timber or metal legs.	W 1200 x D 700 x H 450	£452	£477
	STE 05	A three seat rectangle modular stool available with timber or metal legs.	W 1800 x D 700 x H 450	£601	£628
	STE 06	A single seat modular chair available with timber or metal legs.	W 600 x D 700 x H 820	£525	£584
	STE 07	A double seat modular chair available with timber or metal legs.	W 1200 x D 700 x H 820	£777	£800
	STE 08	A triple seat modular sofa available with timber or metal legs.	W 1800 x D 700 x H 820	£964	£989
	STE 09	A single seat modular corner chair with 90 degree back, available with timber or metal legs.	W 700 x D 700 x H 820	£704	£746
	STE 10	A single seat modular corner chair with radius back, available with timber or metal legs.	W 700 x D 700 x H 820	£666	£697
	STE 11	A single seat modular right hand chair available with timber or metal legs.	W 700 x D 700 x H 820	£748	£838
	STE 12	A single seat modular left hand chair available with timber or metal legs.	W 700 x D 700 x H 820	£748	£838
	STE 13	A single seat armchair available with timber or metal legs.	W 800 x D 700 x H 820	£897	£1,014
	STE 14	A two seater modular right hand sofa available with timber or metal legs.	W 1300 x D 700 x H 820	£905	£1,052
	STE 15	A two seater modular left hand sofa available with timber or metal legs.	W 1300 x D 700 x H 820	£905	£1,052
	STE 16	A two seater sofa available with timber or metal legs.	W 1400 x D 700 x H 820	£1,079	£1,226
	STE 17	A three seater modular right hand sofa available with timber or metal legs.	W 1900 x D 700 x H 820	£1,113	£1,203
	STE 18	A three seater modular left hand sofa available with timber or metal legs.	W 1900 x D 700 x H 820	£1,113	£1,203
	STE 19	A three seater sofa available with timber or metal legs.	W 2000 x D 700 x H 820	£1,302	£1,420
	STE 20	A single seater modular high back chair available with timber or metal legs.	W 600 x D 700 x H 1400	£775	£861
	STE 21	A two seater modular high back sofa available with timber or metal legs.	W 1200 x D 700 x H 1400	£951	£1,014

STREAM



Stream Seating Collection					
Product image	Code	Description	Dimensions mm	Band 1	Band 2
	STE 22	A three seater modular high back sofa available with timber or metal legs.	W 1800 x D 700 x H 1400	£1,226	£1,302
	STE 23	A single seater modular high back corner chair with 90 degree back, available with timber or metal legs.	W 700 x D 700 x H 1400	£1,025	£1,155
	STE 24	A single seater modular right hand high back chair available with timber or metal legs.	W 700 x D 700 x H 1400	£995	£1,111
	STE 25	A single seater modular left hand high back chair available with timber or metal legs.	W 700 x D 700 x H 1400	£995	£1,111
	STE 26	A single seater high back armchair available with timber or metal legs.	W 800 x D 700 x H 1400	£1,208	£1,367
	STE 27	A two seater modular right hand high back sofa available with timber or metal legs.	W 1300 x D 700 x H 1400	£1,191	£1,319
	STE 28	A two seater modular left hand high back sofa available with timber or metal legs.	W 1300 x D 700 x H 1400	£1,191	£1,319
	STE 29	A two seater high back sofa available with timber or metal legs.	W 1400 x D 700 x H 1400	£1,428	£1,640
	STE 30	A three seater modular high back right hand sofa available with timber or metal legs.	W 1900 x D 700 x H 1400	£1,504	£1,632
	STE 31	A three seater modular high back left hand sofa available with timber or metal legs.	W 1900 x D 700 x H 1400	£1,504	£1,632
	STE 32	A three seater high back sofa available with timber or metal legs.	W 2000 x D 700 x H 1400	£1,741	£1,997
	STE 33	A two seater high back booth with table. Available with timber or metal legs.	W 2100 x D 800 x H 1400	£2,927	£3,177
	STE 34	A four seater high back booth with table. Available with timber or metal legs.	W 2100 x D 1400 x H 1400	£4,070	£4,316
	STE 35	A six. Seater high back booth with table. Available with timber or metal legs.	W 2100 x D 2000 x H 1400	£5,521	£5,762
	STE 36	A single stool Semi Circle.	W 1200 x D 700 x H 450	£536	£588
	STE 37	A Four seater with central back with a two seater each side.	W 1200 x D 1200 x H 820	£1,313	£1,355
	STE 38	A single curved unit at 90 degree	W 1840 x D 875 x H 820	£1,071	£1,166
	STE 39	A Large 40 degree sofa with right arm	W 2145 x D 860 x H 820	£1,218	£1,334
	STE 40	A Large 40 degree sofa with right arm	W 2145 x D 860 x H 820	£1,218	£1,334
	STE 41	A Single seat at 45 degree	W 1025 x D 750 x H 820	£819	£872
	STE 42	A two seater high back booth with half depth arms, with table. Available with timber or metal legs.	W 2100 x D 800 x H 1400	£2,927	£3,177

*Booth pricing includes standard pole leg and MFC table top.



STREAM



Stream Seating Collection

Product image	Code	Description	Dimensions mm	Band 1	Band 2
	STE 43	A four seater high back booth with half depth arms, with table. Available with timber or metal legs.	W 2100 x D 1400 x H 1400	£4,070	£4,316
	STE 44	A six seater high back booth with half depth arms, with table. Available with timber or metal legs.	W 2100 x D 2000 x H 1400	£5,521	£5,762
	STE 45	A two seater high back booth, no arms, with table. Available with timber or metal legs.	W 2100 x D 700 x H 1400	£2,717	£2,967
	STE 46	A four seater high back booth, no arms, with table. Available with timber or metal legs.	W 2100 x D 1300 x H 1400	£3,860	£4,106
	STE 47	A six seater high back booth, no arms with half depth arms, with table. Available with timber or metal legs.	W 2100 x D 1900 x H 1400	£5,311	£5,552
	STE 48	A two seater low back booth, no arms, with table. Available with timber or metal legs.	W 2100 x D 700 x H 820	£2,146	£2,344
	STE 49	A four seater low back booth, no arms, with table. Available with timber or metal legs.	W 2100 x D 1300 x H 820	£3,049	£3,242
	STE 50	A six seater low back booth, no arms with half depth arms, with table. Available with timber or metal legs.	W 2100 x D 1900 x H 820	£4,196	£4,385

*Booth pricing includes standard pole leg and MFC table top.

*Lockable castors available on request.

THINKPOD

The ThinkPod range offers a versatile selection, catering to diverse needs with single, two-seater, four-seater, and six-seater options. The design philosophy extends to booths with variations in configuration – flat, pitched, and open – ensuring that every setting finds its perfect match within this innovative collection.



ThinkPod Collection					
Product image	Code	Description	Dimensions mm	Band 1	Band 2
	THI 01	A Single study Pod with Seat, Back and Table.	W 1220 x D 800 x H 2150	€3,838	€4,084
	THI 02	A single agile Pod with Seat, Back and Table. Capable of wheeling under doorways.	W 1220 x D 800 x H 1950	€4,618	€4,924
	THI 03	A Single study Pod with Table. Room for either standing or High stool	W 1220 x D 800 x H 2200	€3,838	€4,084
	THI 04	A Single study Pod with Table. Room for a wheelchair.	W 1750 x D 800 x H 2200	€4,434	€4,718
	THI 05	A Two seater study Pod with Seats, Backs and Table.	W 2100 x D 800 x H 2150	€5,220	€5,554
	THI 06	A Two seater agile Pod with Seats, Backs and Table. Capable of wheeling under doorways.	W 2100 x D 800 x H 1950	€6,086	€6,500
	THI 07	A Two seater study Pod with Seats, Backs and Table. With no back wall.	W 2100 x D 700 x H 2200	€4,826	€5,134
	THI 08	A Two seater agile Pod with Seats, Backs and Table. Capable of wheeling under doorways. With no back wall	W 2100 x D 700 x H 1950	€5,712	€6,080
	THI 09	A Two seater study Pod with Seats, Backs and Table. With Pitched Roof.	W 2100 x D 800 x H 2150	€5,812	€6,184
	THI 10	A Two seater study Pod with Seats, Backs and Table. With no back wall and with Pitched Roof.	W 2100 x D 700 x H 2200	€5,418	€5,764
	THI 11	A Two seater agile Pod with Seats, Backs and Table. Capable of wheeling under doorways. With no back wall and with a Pitched Roof.	W 2100 x D 800 x H 1950	€5,648	€7,130
	THI 12	A Two seater agile Pod with Seats, Backs and Table. Capable of wheeling under doorways. With no back wall and with a Pitched Roof.	W 2100 x D 700 x H 1950	€6,296	€6,710
	THI 13	A Two Seater Booth with Seats, Backs and table.	W 2100 x D 800 x H 1400	€3,839	€4,084
	THI 14	A Four seater study Pod with Seats, Backs and Table.	W 2100 x D 1500 x H 2150	€7,392	€7,864
	THI 15	A Four seater agile Pod with Seats, Backs and Table. Capable of wheeling under doorways.	W 2100 x D 1500 x H 1950	€8,182	€8,704
	THI 16	A Four seater study Pod with Seats, Backs and Table. With no back wall.	W 2100 x D 1400 x H 2200	€6,996	€7,444
	THI 17	A Four seater agile Pod with Seats, Backs and Table. Capable of wheeling under doorways. With no back wall	W 2100 x D 1400 x H 1950	€8,182	€8,704
	THI 18	A Four seater study Pod with Seats, Backs and Table. With Pitched Roof.	W 2100 x D 1500 x H 2150	€8,182	€8,704
	THI 19	A Four seater study Pod with Seats, Backs and Table. With no back wall and with Pitched Roof.	W 2100 x D 1400 x H 2200	€7,786	€8,284
	THI 20	A Four seater agile Pod with Seats, Backs and Table. Capable of wheeling under doorways. With no back wall and with a Pitched Roof.	W 2100 x D 1500 x H 1950	€9,366	€9,964
	THI 21	A Two seater agile Pod with Seats, Backs and Table. With no back wall and with a Pitched Roof.	W 2100 x D 1400 x H 1950	€8,970	€9,544

*Booth pricing includes standard pole leg and MFC table top.

THINKPOD

In the dynamic landscape of modern workspaces and educational environments, adaptability and creativity are paramount. Enter ThinkPod, a revolutionary furniture range meticulously crafted by 2020 Furniture Design to redefine the way we collaborate, ideate, and engage. With an insightful meaning behind its name, Thinkpod embodies a space where ideas are born, nurtured, and brought to life.



ThinkPod Collection					
Product image	Code	Description	Dimensions mm	Band 1	Band 2
	THI 22	A Four Seater Booth with Seats, Backs and table.	W 2100 x D 1400 x H 1400	€5,418	€8,764
	THI 23	A Six seater study Pod with Seats, Backs and Table.	W 2100 x D 2000 x H 2150	€9,366	€9,964
	THI 24	A Six seater agile Pod with Seats, Backs and Table. Capable of wheeling under doorways.	W 2100 x D 2000 x H 1950	€10,844	€11,540
	THI 25	A Six seater study Pod with Seats, Backs and Table. With no back wall.	W 2100 x D 1900 x H 2200	€8,970	€9,544
	THI 26	A Six seater agile Pod with Seats, Backs and Table. Capable of wheeling under doorways. With no back wall.	W 2100 x D 1900 x H 1950	€10,450	€11,120
	THI 27	A Six seater study Pod with Seats, Backs and Table. With Pitched Roof.	W 2100 x D 2000 x H 2150	€10,352	€11,014
	THI 28	A Six seater study Pod with Seats, Backs and Table. With no back wall and with Pitched Roof.	W 2100 x D 1900 x H 2200	€9,958	€10,594
	THI 29	A Six seater agile Pod with Seats, Backs and Table. Capable of wheeling under doorways. With no back wall and with a Pitched Roof.	W 2000 x D 2000 x H 1950	€11,830	€12,590
	THI 30	A Two seater agile Pod with Seats, Backs and Table. With no back wall and with a Pitched Roof.	W 2100 x D 1950 x H 1950	€11,438	€12,170
	THI 31	A Six Seater Booth with Seats, Backs and table.	W 2100 x D 2000 x H 1400	€6,800	€7,234

*Booth pricing includes standard pole leg and MFC table top.



VERTA

Sleek yet inviting, the Verta Sofa Collection is a statement in modern craftsmanship. Defined by its elegant pitched arms and sculpted back, every line is a study in balance—structured yet relaxed, bold yet effortlessly refined. Inspired by the word “vertical,” Verta reflects clean architectural lines, giving it a modern yet timeless presence.



ThinkPod Collection					
Product image	Code	Description	Dimensions mm	Band 1	Band 2
	VER 01	A Single Seater Arm Chair with fixed seat cushion made to look loose. Perfect for the modern breakout area.	W 1095 x D 800 x H 730	£1,364	£1,548
	VER 02	A Two Seater Sofa with fixed seat cushion made to look loose. Perfect for the modern breakout area.	W 1715 x D 800 x H 730	£1,636	£1,748
	VER 03	A Three Seater Sofa with fixed seat cushion made to look loose. Perfect for the modern breakout area.	W 2185 x D 800 x H 730	£1,874	£1,996

*Standard Leg colour Option to be Beech, Black or White



BREAKOUT

ACOUSTIC PODS

FLEXI FOCUS

Flexi is designed for the modern workplace and learning environments by creating individual work spaces allowing users to concentrate on the task at hand. Our range of beautifully designed acoustic screens provide great flexibility in creating your perfect working or learning environment. Not only do they allow you to softly divide space but they also offer superb functionality whether you are looking to create breakout, meeting, collaborative space, hot desks or dining areas.

With varying heights, shapes, colours and almost countless configurations our Flexi range works great together or as individuals and is the right choice for any project.



Flexi Focus screen pod Collection					
Product image	Code	Description	Dimensions mm	Band 1	Band 2
	FF01 1100	A single seated fully upholstered pod with acoustic properties. Available with two tone strip and 650mm deep table.	W 1000 x D 1000 x H 1100	£1,691	£1,781
	FF02 1100	A 2 seated fully upholstered pod with acoustic properties. Available with two tone strip and 650mm deep table.	W 1945 x D 1000 x H 1100	£2,854	£3,001
	FF03 1100	A 3 seated fully upholstered pod with acoustic properties. Available with two tone strip and 650mm deep table.	W 2900 x D 1000 x H 1100	£4,026	£4,229
	FF04 1100	A 4 seated fully upholstered pod with acoustic properties. Available with two tone strip and 650mm deep table.	W 3850 x D 1000 x H 1100	£5,179	£5,441
	FF05 1100	A 5 seated fully upholstered pod with acoustic properties. Available with two tone strip and 650mm deep table.	W 4800 x D 1000 x H 1100	£6,342	£6,661
	FF01 1350	A single seated fully upholstered high pod with acoustic properties. Available with two tone strip and 650mm deep table.	W 1000 x D 1000 x H 1350	£1,976	£2,081
	FF02 1350	A 2 seated fully upholstered high pod with acoustic properties. Available with two tone strip and 650mm deep table.	W 1945 x D 1000 x H 1350	£3,398	£3,574
	FF03 1350	A 3 seated fully upholstered high pod with acoustic properties. Available with two tone strip and 650mm deep table.	W 2900 x D 1000 x H 1350	£4,622	£4,855
	FF04 1350	A 4 seated fully upholstered high pod with acoustic properties. Available with two tone strip and 650mm deep table.	W 3850 x D 1000 x H 1350	£5,844	£6,138
	FF05 1350	A 5 seated fully upholstered high pod with acoustic properties. Available with two tone strip and 650mm deep table.	W 4800 x D 1000 x H 1350	£7,268	£7,634

*Pricing includes standard MFC table top.

*Available on castors.



FLEXI F2F



Flexi Face 2 Face screen pod Collection

Product image	Code	Description	Dimensions mm	Band 1	Band 2
	F2F 01 1100	A 2 seated fully upholstered pod with acoustic properties. Available with two tone strip and 650mm deep table.	W 1000 x D 2000 x H 1100	€3,148	€3,310
	F2F 02 1100	A 4 seated fully upholstered pod with acoustic properties. Available with two tone strip and 650mm deep table.	W 1945 x D 2000 x H 1100	€5,074	€5,330
	F2F 03 1100	A 6 seated fully upholstered pod with acoustic properties. Available with two tone strip and 650mm deep table.	W 2900 x D 2000 x H 1100	€6,999	€7,348
	F2F 04 1100	A 8 seated fully upholstered pod with acoustic properties. Available with two tone strip and 650mm deep table.	W 3850 x D 2000 x H 1100	€8,824	€9,261
	F2F 05 1100	A 10 seated fully upholstered pod with acoustic properties. Available with two tone strip and 650mm deep table.	W 4800 x D 2000 x H 1100	€10,750	€11,283
	F2F 01 1350	A 2 seated fully upholstered high pod with acoustic properties. Available with two tone strip and 650mm deep table.	W 1000 x D 2000 x H 1350	€3,417	€3,587
	F2F 02 1350	A 4 seated fully upholstered high pod with acoustic properties. Available with two tone strip and 650mm deep table.	W 1945 x D 2000 x H 1350	€5,542	€5,815
	F2F 03 1350	A 6 seated fully upholstered high pod with acoustic properties. Available with two tone strip and 650mm deep table.	W 2900 x D 2000 x H 1350	€7,571	€7,936
	F2F 04 1350	A 8 seated fully upholstered high pod with acoustic properties. Available with two tone strip and 650mm deep table.	W 3850 x D 2000 x H 1350	€9,498	€9,952
	F2F 05 1350	A 10 seated fully upholstered high pod with acoustic properties. Available with two tone strip and 650mm deep table.	W 4800 x D 2000 x H 1350	€11,527	€12,073

*Pricing includes standard MFC table top.

*Available on castors.



FLEXI HEX



Flexi Hex screen pod Collection

Product image	Code	Description	Dimensions mm	Band 1	Band 2
	FLE HEX 001	A single seated fully upholstered Hexagon shaped pod with acoustic properties.	W 1595 x D 1810 x H 1350	£2,898	£3,173
	FLE HEX 002	A 2 seated fully upholstered Hexagon shaped pods with acoustic properties.	W 2770 x D 2688 x H 1350	£5,604	£6,153
	FLE HEX 003	A 3 seated fully upholstered Hexagon shaped pods with acoustic properties.	W 3260 x D 3220 x H 1350	£8,343	£9,171
	FLE HEX 004	A 4 seated fully upholstered Hexagon shaped pods with acoustic properties.	W 3620 x D 3930 x H 1350	£11,084	£12,186
	FLE HEX 006	A 6 seated fully upholstered Hexagon shaped pods with acoustic properties.	W 4770 x D 4770 x H 1350	£16,271	£17,928

*Pricing includes standard MFC table top.

*Available on castors.



FLEXI POD



Flexi Pod screen Collection					
Product image	Code	Description	Dimensions mm	Band 1	Band 2
	FLE P11 01	A single seated fully upholstered pod with acoustic properties. Available with two tone strip and 765mm deep table.	W 1540 x D 1005 x H 1100	£1,612	£1,810
	FLE P11 02	A 2 seated fully upholstered pod with acoustic properties. Available with two tone strip and 765mm deep table.	W 2638 x D 1010 x H 1100	£2,926	£3,222
	FLE P11 03	A 3 seated fully upholstered pod with acoustic properties. Available with two tone strip and 765mm deep table.	W 3734 x D 1010 x H 1100	£4,280	£4,676
	FLE P11 04	A 4 seated fully upholstered pod with acoustic properties. Available with two tone strip and 765mm deep table.	W 4835 x D 1010 x H 1100	£5,632	£6,130
	FLE P11 05	A 5 seated fully upholstered pod with acoustic properties. Available with two tone strip and 765mm deep table.	W 5925 x D 1010 x H 1100	£6,988	£7,584
	FLE P13 01	A single seated fully upholstered pod with acoustic properties. Available with two tone strip and 765mm deep table.	W 1540 x D 1005 x H 1350	£1,832	£2,030
	FLE P13 02	A 2 seated fully upholstered pod with acoustic properties. Available with two tone strip and 765mm deep table.	W 2638 x D 1010 x H 1350	£3,370	£3,670
	FLE P13 03	A 3 seated fully upholstered pod with acoustic properties. Available with two tone strip and 765mm deep table.	W 3734 x D 1010 x H 1350	£5,066	£5,530
	FLE P13 04	A 4 seated fully upholstered pod with acoustic properties. Available with two tone strip and 765mm deep table.	W 4835 x D 1010 x H 1350	£6,654	£7,218
	FLE P13 05	A 5 seated fully upholstered pod with acoustic properties. Available with two tone strip and 765mm deep table.	W 5925 x D 1010 x H 1350	£8,252	£8,918

*Pricing includes standard MFC table top.




*Available on castors.



FLEXI SQU



Flexi Squ screen pod Collection

Product image	Code	Description	Dimensions mm	Band 1	Band 2
	FLE SQU 01	A single seated fully upholstered square pod with acoustic properties. Available with two tone strip.	W 1500 x D 1500 x H 1350	€3,318	€3,520
	FLE SQU 02	A double seated fully upholstered square pod with acoustic properties. Available with two tone strip.	W 3000 x D 1500 x H 1350	€6,296	€6,684
	FLE SQU 04	A quadruple seated fully upholstered square pod with acoustic properties. Available with two tone strip.	W 3000 x D 3000 x H 1350	€11,943	€12,657

*Pricing includes standard MFC table top.

*Available on castors.



FLEXI SQUARE



Flexi Square screen Collection					
Product image	Code	Description	Dimensions mm	Band 1	Band 2
	FS 001 1750	A standard Flexi screen square room with acoustic properties. This area is large enough for meeting with 4-6 people.	W 2500 x D 2500 x H 1750	€6,420	€7,264
	FS 002 1750	A standard Flexi screen double square room linked together with acoustic properties. This area is large enough for meeting with 4-6 people in each room.	W 4945 x D 2500 x H 1750	€12,468	€14,028



Fabric Specification :

We provide furniture upholstered in a variety of fabrics. The most commonly used manufacturer in the UK is Camira.

Our furniture can also be upholstered in many other ranges upon request. Please speak with your account manager to discuss your requirements or refer to the fabric bands in the RRP

Worktops & Panels :

Finishes for the hard surfaces come in variety of ranges and colours. Our standard finishes are available from; Egger and Kronospan. Please speak with your account manager for a list of these finishes.

Metal Legs & Table Bases :

Sofa legs come as standard in chrome, beech and black metal for products using 160H legs and oak for products using 250H legs.

Table legs come as standard as a square pole As Standard In White And Black.

Other options may be available, please speak with your account manager to discuss your requirements.

CARE INSTRUCTIONS:

General Maintenance:

Vacuum regularly to remove dust and grit.

Clean spills and stains quickly to prevent them setting in.

If being used in a spill / stain-prone area specify a stain repellent finish or Scotchgard treatment (additional charges may apply)

For appearance retention we recommend regular professional cleaning to give your furniture a longer life.

Natural Fabrics:

In addition to a regular vacuum, wool and other natural fibres can usually be cleaned using branded upholstery shampoo.

For a deeper clean, it's best that wool be dry cleaned, as over wetting can cause shrinkage and change in appearance.

Never apply bleach, ammonia, alkali or strong acids to wool upholstery.

Synthetic Fabrics:

A vacuum is the best regular maintenance, followed by speed of action to remove spills and stains rapidly as soon as they occur.

Most synthetic fabrics can be wiped down with a water-soaked damp cloth without fear of damaging the fibre or removing the colour. Stubborn stains can be removed with upholstery shampoo.

Care of MFC / Laminates

You should only need to use a clean, damp, non-abrasive cotton cloth, and a mild liquid detergent or household cleaner. Rinse when clean with water. Do not use too much water, especially near edges, as water can cause them to swell. Dry the surface with a soft, clean, non-abrasive cotton cloth.

FABRIC BANDS

<u>BAND 1</u>	<u>BAND 2</u>
CAMIRA ERA	CAMIRA BLAZER
CAMIRA RIVET	CAMIRA SYNERGY
GABRIEL CHILLI	CAMIRA MAINLINE FLAX
GABRIEL CURA	CAMIRA 24/7
GABRIEL NOMA	CAMIRA HEMP
GABRIEL TONAL 140	CAMIRA SILK
	CAMIRA TRACK
	CAMIRA MAINLINE PLUS
	PANAZ HIGHLAND
	PANAZ HIGHLAND STRETCH
	GABRIEL STEP
	GABRIEL STEP MELANGE
<u>VINYL</u>	
	PANAZ ZEST
	PANAZ ASTON
	CAMIRA VITA
<u>SCREEN FABRICS</u>	
CAMIRA CARA	CAMIRA BLAZER LITE
CAMIRA LUCIA	CAMIRA SYNERGY 170
CAMIRA SONUS	
GABRIEL TONAL 170	

Other fabrics are available upon request. Please contact your Account manager for more information

Two tone upholstery is available . Please use the pricing from the Highest band.

GENERAL:

All prices are in pound sterling and do not include vat.

By purchasing from 2020 furniture design you agree to our standard terms and conditions.

DELIVERY & LEAD-TIMES:

All pricing is exclusive of delivery or installation and this is provided as a separate cost on each project. Please contact your account manager for more information.

Our standard lead-time for products in our RRP price list is 6 weeks, with the exception of the below ranges, though this is subject to change.

CAVEA & CONFERENCE Lead-time is 8 weeks.
Bespoke Products Lead-time is 8 weeks.

In the Summer months these lead-times may be extended.
If you require lead-times please contact your account manager.

DELIVERY & INSTALLATIONS:

The following ranges must be delivered and installed by 2020 Furniture Designs installation team.
Session, Solus, ThinKpod, Conference, Ripple, Cavea, Bespoke Projects

WARRANTY

5 Years - normal fair wear & tear.

This includes the structure and foam / padding materials.

Fabrics are covered by fabric manufacturers' warranty, usually 5 years, dependant on fabric choice.

Expected life cycle of 15 years.

1 Year warranty on Electrics & Power Modules.

1 Year warranty on doors and consumables (moving parts such as hinges).

2020 furniture design terms and conditions;

Introduction & Definitions;

- These conditions shall apply to all sales, installations, servicing and repairs of goods and all services supplied or undertaken by 2020 Furniture Design Limited, or any other division or associated Company of 2020 Furniture Design Limited hereinafter referred to as the "Seller", "we", or "us", or "our".
- The "Buyer", "you" or "your" means any person, firm, company or corporation or organisation who contracts with the Seller for the sale, purchase, hire, repair or refurbishment of goods or supply of Services, or labour.
- The word "site" means the building or part of a building including its external environs at which work is to be executed, services supplied, or to which goods are to be supplied under the Contract.
- The word "contract" means the contract for the sale, purchase, hire, repair or refurbishment of goods or the supply of services or execution of works.
- The words "services" and "work" are interchangeable and include, but are not limited to, the supply of services to property, buildings or goods and the supply of labour.
- By accepting a quotation or asking the Seller to do work or supply goods, the Buyer agrees that these conditions will apply and will prevail over all other conditions, including any conditions referred to in the Buyer's purchase order unless confirmed otherwise in writing by the Proprietor of 2020 Furniture Design Limited.
- These conditions supersede any earlier conditions issued by the Seller and no alterations or additions to, or exclusion of any part, shall be applicable unless specifically agreed to in writing by the Seller.

Prices & Quotations;

- All prices quoted exclude VAT and all applicable taxes and duties, which shall be added to the invoice at the rate prevailing at the tax point.
- The price given in any price list, or written or verbal quotation by the Seller, is for goods ex-works, excluding delivery, off-loading and assembly unless otherwise stated in writing.
- Any quotation, detailed or budget, provided by the Seller will be based on the information available, or schedule or drawings provided by the Buyer. It is the duty of the Buyer to make known any special requirements.
- Prices are based on agreed quantities and order size. Should the Buyer reduce the quantities or order size, the Seller reserves the right to charge at alternative rates appropriate to the amended order.
- The Seller reserves the right to levy additional charges at the Seller's normal rates for any additional costs arising from variations to the order communicated to the Seller by the Buyer after quotation.
- All prices are subject to variation without notice to cover any increase in costs incurred by the Seller including the costs of materials, carriage, labour, overheads, imposition of tax duty or other levy and any variation of exchange rates since the date of acceptance of order.
- All goods quoted from stock are quoted subject to being unsold when the Buyer's order is accepted.
- Unless the Sellers agree specifically otherwise in writing the quoted price does not include the amount of any government or local authority fees for consents, nor any provision for the cost of heating, lighting, power and water used on site, and the Buyer will reimburse the Seller for any expenditure reasonably incurred on such items and welfare facilities.
- The Seller reserves the right to amend any quotation or invoice which contains an accidental typing, arithmetical or similar error or omission, at whatever stage it is discovered, and the Buyer agrees to pay the Seller the corrected amount.
- If at the Buyer's request or approval, the Seller agrees to carry out work outside normal working hours, as defined in any Clause stated below then the Buyer agrees to pay the additional cost of such overtime working.
- If the contract work involves dismantling and re-fitting of partitions, lighting, glazing, etc., the Seller will take due care, but the Buyer agrees to pay the cost of obtaining replacement of any materials the Seller does not consider reusable.
- If when the Seller has not anticipated any need for scaffolding or other access equipment (e.g. if the Seller has quoted from drawings) but in the event the Seller considers scaffolding necessary for safe working, then the cost of providing and erecting it will be extra.
- If the Buyer is in breach of any obligations to the Seller under any contract with the Seller, then (without prejudice to any other remedy the Seller may have), the Buyer will pay the Seller at the Seller's normal rates for all time wasted as a result of the breach.

Specification of Goods;

- The Buyer, whether acting directly for themselves or as an agent for another party, shall be responsible for the correct specification of goods including work to be carried out.
- The Buyer shall be responsible for giving the Seller any necessary information or samples relating to the specification of the goods within a sufficient time to enable the Seller to perform the contract in Accordance with these conditions or within any other agreed lead time.
- The Seller reserves the right to make without notice any changes in the materials, specification or design of the goods which may be required to conform with any safety or statutory requirements, or, Having regard to all the circumstances, considers them reasonable or desirable. Such changes will not affect the validity of the contract.
- The Buyer on ordering;
 - Warrants and acknowledges that they have not relied on any representation made by the Seller or its employees or agents, or upon any descriptions and technical specifications, drawings, dimensions and weights, and waives any claim or breach of any such representation.
 - Warrants to the Seller that they are satisfied that the goods are sufficient and suitable for the purpose or purposes intended.
 - Covenants that the goods will (either by themselves or by any third party) be properly used or dealt with, and only in a manner fit for the purpose for which they are sufficient and suitable.
- Although every effort will be made by the Seller to match colours and materials, the Seller cannot guarantee that a variation in such colours and materials will not occur.
- It is the responsibility of the Buyer to examine the goods for defects in materials and/or workmanship or design which are likely to cause damage or injury.

The Buyers Responsibilities;

- Unless the Seller agrees otherwise in writing, the Buyer is responsible for obtaining any required consents for carrying out the contract, including planning permission, building control, listed building consent, conservation area approval, fire certification and any other statutory consents, and for serving any notices and paying any fees for any such consents.
- The Buyer is responsible to ensure before the contract work commences that any recent cement or plasterwork, etc., at the site is thoroughly dried out and that the site is externally weatherproof, the Buyer will not hold the Seller responsible for any damage or defect to our workmanship or materials arising from excessive dampness, excess temperature, settlement, shrinkage, leaching, corrosion or other chemical action, or to any other factor over which the Seller has no control.
- The Buyer must give the Seller unimpeded access to the site during normal working hours as defined in Clauses below from Monday to Friday for carrying out the contract work and incidental matters.
- The Buyer must provide at his own expense effective heating, ventilation, lighting and power at all times during the period of the contract.
- Unless no-one other than the Seller's workmen can gain access to the site during the period of the contract work, the Buyer must make adequate secure on-site storage available for materials awaiting fixing and for plant, equipment and loose tools, or be liable for any loss or damage unless due to any act or default on the Seller's part.

Advice, Information & Samples;

- Although every reasonable precaution will be taken to ensure accuracy of such information, all descriptive matter, colours, dimensions, weights, fire and acoustic performance and other documentation supplied by the Seller, and the descriptions and illustrations contained in the Seller's catalogues, price lists and other marketing material, are approximate only and are intended merely as a general description of the goods. They are not, unless specifically expressed in the contract, deemed to form any part of the contract or conditions of sale and are not to be regarded as a warranty or representation.
- Any estimates given in respect of quantities needed, or advice as to the suitability or fitness of any goods for any particular purpose given by the Seller or its employees or agents, is given in good faith but is without obligation or responsibility on the part of the Seller, and the Buyer is entirely responsible for ascertaining the quantities required and the suitability and fitness of the goods or services for the purpose intended.
- Any samples or other items which the Buyer supplies or arranges to be supplied to the Seller, shall be delivered at the sole risk and expense of the Buyer and shall remain at the Buyer's risk and expense throughout the period of them, remaining at the Seller's address or other address that the Seller may specify.
- Where samples are supplied, or are to be supplied by the Seller, no work will be undertaken by the Seller with regard to the bulk of the Buyer's order unless or until the Buyer has notified the Seller that the samples are in all respects satisfactory.
- The Seller may at its own discretion deem that the Buyer has so notified the Seller that the samples are in all respects satisfactory if there is no express written rejection of such samples within 7 working days of delivery to the Buyer.

Ordering;

- The placing of an order by the Buyer, whether verbal or written, should be deemed to include acceptance by the Buyer of these conditions which will form the conditions of the contract and shall apply to the exclusion of any other terms or conditions put forward by or on behalf of the Buyer, unless such alterations or qualifications requested in writing by the Buyer are agreed in writing by the Seller.
- Any typographical, clerical or other error or omission in any literature, quotations, price lists, acceptance of order, invoice or other document or information issued by the Seller shall be subject to correction without any liability on the part of the Seller.
- The Buyer acknowledges that before entering into the contract that the Buyer has expressly represented and warranted that the Buyer is not insolvent, has not committed an act of bankruptcy or been subject to any Act of Insolvency.
- The Buyer may not cancel any order once accepted by the Seller without the written consent of the Seller, and the Buyer will in any event be liable to the Seller for a cancellation charge to cover all expenses or losses (including loss of profit) incurred by the Seller in relation to any such cancellation.
- The Seller shall in no circumstances accept a cancellation of any order for goods which are to be specially made or obtained once such an order has been accepted by the Seller, nor will any allowance be made in respect of such goods where they are subsequently returned.
- Goods are not sold on a sale or return basis. The Seller shall have the right to choose whether to accept or reject the return of any goods which have been over-ordered or ordered incorrectly.
- In the event of the Seller accepting such goods for return, acceptance shall be upon terms such as the Seller may determine at the time and in particular, reserves the right to make a charge for the carriage and handling of the goods and for time spent on administration.

Payment;

- If the Buyer does not have an account with the Seller, all goods are supplied on a pro-forma basis.
- The Seller's prices are strictly net, and no deduction may be made from the total on the invoice. Where the Buyer has an account, unless other terms have been agreed in writing in advance, the Buyer will pay 50% of the quoted price on placing of the order and the balance as follows: for goods, on or before the date of delivery, for works or services, within 14 days of completion of work or services or invoice for stage payment for value of works done (whether completed or not) or materials delivered to site. Such a stage-payment invoice is to cover the value of materials delivered to the site plus the value of work done plus any disbursements incurred.
- The Buyer shall not be entitled to withhold, or offset payment of any amount due to the Seller, in respect to any claims by the Buyer in respect of goods supplied by the Seller, or for any other reason which is contested or for which liability is not admitted by the Seller in writing.
- Where part delivery or scheduled supply is required, interim payments shall be made by the Buyer, and if default is made in payment on the due date, the Seller shall have the right to suspend forthwith any further deliveries or works until payment is received.
- Where the Buyer owes the Seller monies which have not been paid in accordance with the agreed terms and condition clauses, the Seller may at its own discretion suspend deliveries of goods or execution of works or services without incurring any liability to the Buyer until has paid such monies to the Seller.
- Where the Buyer requests delivery to be postponed and/or goods stored, full payment for completed work will become due for those goods held in store, and the storage costs will be added at the commercial rates in force at that time.
- Without prejudice to the Seller's right to enforce payment, if the Buyer fails to make payment in accordance with these terms, the Seller is entitled to charge interest on any balance outstanding from the date the same became due, until payment is made, at the rate of 20 percent per month or part-month.
- The Seller shall have the right to close the Buyer's account at any time at his discretion.

Subcontracting;

- The Seller may subcontract the whole or any part of parts of the performance of the contract.
- The Buyer must obtain the Seller's consent before transferring or assigning benefit under this contract to any other person or firm.

The Buyers Materials;

- If the Seller agrees to carry out work on the Buyer's materials, the Seller's liability will be limited to the cost at which the Buyer purchased or manufactured them and the Seller will not able liable for any consequential loss, and carriage of the materials (where necessary) to and from the premises where work is to be done will be for the Buyer's account; and the Seller may exert a lien on the materials for outstanding amounts due and after 14 days' notice may sell the materials to recoup the outstanding amount and expenses of sale.
- The Buyer warrants that the Buyer's goods conform with any relevant standards or government regulations.

Copyright;

- Any specification, drawing or other particulars submitted to the Buyer with a quotation remain the Seller's property and must be returned to the Seller on request. These are the Seller's copyright and must not be disclosed to any third party without the Seller's permission.

Delivery;

- Delivery Dates – Time Not Of The Essence Delivery dates or dates for works or services to be carried out given by the Seller are intended as estimates only and time will not be of the essence.
- Delivery is made by the Buyer collecting the goods from the Seller’s premises after the Seller has notified the Buyer that the goods are ready for collection or by the Seller delivering the goods to another address by prior arrangement with the Buyer.
- Where the Buyer appoints an agent to accept delivery on the Buyer’s behalf, it shall be deemed by the Seller that the Buyer invests the agent with full powers and right to authorise inspection and acceptance of delivery.
- The Seller reserves the right to deliver in instalments. Where the goods are delivered in instalments [either by prior agreement with the Seller or pursuant to these conditions, each delivery shall constitute a separate contract, and failure by the Seller to deliver any one or more of the instalments in accordance with these conditions, or any claim by the Buyer in respect of any one or more instalments, shall not entitle the Buyer to treat the contract as a whole as repudiated.
- Where delivery is made by a carrier, it shall be under the usual terms and conditions of such a carrier.
- Where delivery is made by the Seller’s own transport, it shall be deemed to be “kerbside” delivery only. The Buyer shall be responsible for provision of the necessary personnel to assist the driver with offloading of the goods from the Seller’s transport.
- It is the Buyer’s responsibility to notify the Seller of any vehicular or access restrictions or difficulties.
- If the Buyer fails to take delivery of the goods, or fails to give adequate delivery instructions at the time notified by the Seller, then without prejudice to any other right or remedy available to the Seller, the

Seller may;

- o Return the goods to store (at its own or any third party’s premises) and charge the Buyer for its reasonable costs including carriage, storage, insurance and VAT,

and/or;

- o Sell the goods at any time at the best price readily obtainable and charge the Buyer for any shortfall below the price that would have been received under the contract.

- The Buyer shall undertake to examine all goods on delivery.
- Notification of short deliveries or damage in transit must be made to the Seller verbally within 24 hours of delivery and confirmed in writing within 48 hours.
- Notification of loss or non-delivery must be made in writing to the Seller within 14 days after the date of the Seller’s invoice.
- The Seller shall have the right of option to make good by reimbursement of the whole or part of the price, or by repair or replacement, any such non-delivery, short delivery, loss or damage notified in accordance with the conditions above, and without affecting the validity of the contract.
- If the Seller cannot deliver goods or commence work on an agreed date because the Buyer requests the Seller not to, or because the site is not ready, or because of any default on the Buyer’s part, or if there is any interruption to the continuity of the work in a logical sequence, then the Buyer agrees to recompense the Seller as in the above clauses.
- Compensation is to comprise: any direct costs, including abortive journeys, fitter’s labour, waiting time, additional handling, storage and transport costs, etc. (provided that in the case of fitter’s labour costs, no charge will be raised if 7 days notice of the postponement is given); and if the delay (or total delay) exceeds 14 days, one percent of the contract price per calendar month or part thereof of the delay by way of liquidated damages to compensate the Seller for indirect costs resulting from the delay.

Timing;

- The Seller will make best endeavours to comply with the Buyer’s wishes regarding dates of starting and finishing work. However, any periods given in the Seller’s quotation (e.g. for ordering goods or materials and / or for carrying out work) are estimates only and the Seller will not be liable in any way if these or subsequently agreed periods or dates are exceeded, for any reason outside the Seller’s control. Time is not of the essence.

Installation;

- Where installation is to be undertaken by the Seller, it shall be the Buyer’s responsibility to make sure that the Seller has unrestricted access to the installation area for free movement of personnel, goods and equipment between installation area and any vehicles or storage areas required for the duration on site, and to ensure that any such areas are ready in all respects for the installation on such date as may have been agreed between the parties.
- Where any other trades or works such as for example, the addition, alteration or removal of electrical communication equipment and cabling and/or the emptying of storage units or moving of furniture or building works is required prior to installation by the Seller, it is the Buyer’s responsibility to co-ordinate such works and to ensure it is completed in time in accordance with conditions above.
- Unless specifically agreed otherwise in writing by the Seller, all installation costs are based on a working day of 7:30am to 5.30pmMonday – Friday (excluding Bank Holidays), including reasonable traveling time, and that work can proceed on a single-phase basis of starting on site and continuing on consecutive days if needed until completion of the contract.
- In the event that these conditions above are not complied with by the Buyer, the Seller shall be entitled to make additional charges in respect of any costs and expenses incurred in consequence.
- Where installation of the goods is not done by the Seller or its approved subcontractor, the Buyer undertakes that the goods will be installed, used, kept stored, maintained and serviced in strict compliance with any relevant instructions of the supplier and that the Buyer will notify any subsequent purchasers of such instructions. Failure to do so will invalidate the Seller’s liability for damage caused to or by the goods. It is the Buyer’s responsibility to ensure that these instructions have been obtained from the Seller.

Risk and Title - Retention Of Title Until Payment Is Made In Fill;

- The risk in goods delivered shall pass to the Buyer as soon as they enter the building or site.
- The risk in work done shall pass on completion of each separate section of the work.
- Goods supplied, and work done remain the Seller’s property until paid for in full and until any other monies the Buyer owes the Seller have been paid for in full. The Seller may enter the site and detach (if necessary) and recover such goods and / or materials if payment is overdue, or if the Buyer has become insolvent, or if any act indicating insolvency has taken place.
- Until the title in the goods has passed to the Buyer, the Buyer shall be in possession of the goods solely as fiduciary bailee for the Seller and shall mark the interest of the Seller on the goods. If the Buyer shall fail to mark the goods in compliance with this clause, the burden of proving that any equal or lesser quantity of goods of the same description as the goods supplied in the possession of the Buyer at any material time has been paid for in full, falls on the Buyer. If the Buyer resells goods or work which remains the Seller’s property as in 14.3 the Buyer will hold the proceeds of sale in trust for the Seller to the extent of the Buyer’s debt to the Seller and promptly pay these monies to the Seller.
- The Buyer’s Power of Sale shall automatically cease if a receiver is appointed over any of the assets or undertaking of the Buyer or a winding up order is made against the Buyer or the Buyer goes into liquidation or calls a meeting or asks any arrangement of composition with creditors or commits an Act of Insolvency.
- Should the Buyer’s Power of Sale cease as per the provision in condition above, the Buyer shall place the goods at the disposal of the Seller, and the Seller and its employees or agents shall be irrevocably licensed, using only such force as is necessary, to enter upon any premises where the goods are held for the purpose of their removal.
- The Seller may claim payment from the Buyer for goods or work whether or not the property in them has passed.

Liability;

- The Seller shall not be liable for any damage or injury caused by its goods or workmanship beyond replacement or repair of the said goods or works on verification of the Buyer’s complaint, except in respect of death or personal injury caused by the negligence of the company, its officers, employees or agents and any liability which cannot be excluded under Part 1 Consumer Protection Act 1987).
- In case of defective goods or workmanship, or the failure of goods to correspond with the specifications agreed, such defects or failures must be notified to the Seller within 3 days of the installation of the goods. Liability shall be limited to the repair or replacement of the said goods or the offer of reimbursement of the whole, or part of, the cost of the goods involved, and shall exclude any other loss or consequential loss or expense howsoever arising.
- The Seller shall not be liable for any defect developing under fair wear and tear, willful damage, negligence, lack of proper maintenance or servicing, abnormal working conditions, failure to follow the Seller’s instructions (whether verbal or written), misuse or alteration or repair of the goods without the Seller’s express approval.
- The Seller shall not be liable for any defect in its goods arising from any drawings, designs, specifications, or parts supplied by the Buyer.
- The Seller shall not be liable for any defects in parts not manufactured by the Seller in respect of which, the Buyer shall only be entitled to the benefit of any such warranty as it is given by the manufacturer to the Seller.
- The Seller shall not be liable for any loss of profits, or any other incidental or consequential loss or expense caused by either its failure or delay in supplying, repairing or installing goods, or through any other negligence of its employees or agents.
- The Seller shall be under no liability for any loss, consequential loss, damage or delay, or expense of any kind whatsoever caused wholly or in part, by Act of God, outbreak of war, civil commotion, Governmental policies or restrictions or control, including restrictions of export or import or other licenses, trade or industrial disputes of whatever nature, whether or not such dispute involves the Seller, its servants or agents, or by any other contingency whatsoever which is beyond the control of the Seller.
- The limitations of liability in clauses shall not apply where and to the extent that a prohibition against exclusion or restriction of obligations applies in law.

Guarantees;

- The Seller will give the Buyer the benefit of any manufacturer’s warranty in respect of goods and materials, but give no warranty ourselves in respect of goods and materials except as specified in our literature or quotations. Such guarantees are valid for the period stated provided that
 - o Where the goods have been installed by the Buyer or the Buyer’s agents, they have been assembled correctly in accordance with the Seller’s instructions; and
 - o The goods are used for their correct and agreed purpose.
 - o Fair wear and tear is excluded from this guarantee.
- Any faults parts, or work, or complete goods may be repaired or replaced.
- Any defective goods requiring replacement or repair shall be made available for collection by the Seller from a point within the mainland of Great Britain.
- Any guarantee given by the Seller is invalidated if the goods are subject to misuse or accident after the Buyer has taken delivery.
- The Buyer must notify the Seller within 4 weeks (the time limit is essential) of any defects in goods of our manufacture or in our workmanship, and provide satisfactory proof of the defect, and the Buyer must also give the Seller access at all reasonable times to carry out inspection and remedial work, or the Seller will not be liable
- The Buyer agrees that the breach of any warranty gives the Buyer no right to cancel the contract.
- The Seller gives no guarantee as to the fitness of any goods or works for the Buyer’s purposes.
- The Seller reserve the right to make reasonable amendments to descriptions or specifications of materials or goods (e.g. as given in the manufacturer’s sales literature) and the Buyer will accept any such amendment.

Applicable Law And Jurisdiction;

- The contract shall in all respects be governed by and construed in accordance with English law.
- It is irrevocably agreed for the exclusive benefit of the Seller that the Courts of England are to have jurisdiction to settle any dispute which may arise out of, or in connection with, the contract. Nothing in this clause shall limit the right of the Seller to take proceedings against any other party in any other Court of competent jurisdiction, nor shall the taking of proceedings in one or more jurisdiction preclude the taking of proceedings in any other jurisdiction, whether concurrently or not.
- Where the Seller acts as a Subcontractor for the supply and installation of their goods and Terms and Conditions can not be agreed in writing, the Seller will agree to act under an unamended JCT 2016 subcontract.

General;

- Non Waiver Of Rights The failure of either party to the contract to exercise or enforce any rights conferred by the contract, or any particular clause of the contract, shall not be deemed to be a waiver of any such right, nor operate so as to bar the exercise or enforcement of the contract or any particular clause of the contract at any time in the future.
- The headings appearing above each condition or clause are for reference purposes only and shall not affect or limit the interpretation and effect of these conditions as a whole.
- In the event of the invalidity of any of these conditions of any paragraph, sub-paragraph or part thereof, the same should be severed and shall not affect the validity or enforceability of the remaining provisions.



BRIGADE HOUSE
ALINGTON ROAD
LITTLE BARFORD
ST NEOTS
PE19 6WG

TEL: 01480 700 050
E-MAIL: SALES@2020FURNITUREDESIGN.CO.UK
WEB: WWW.2020FURNITUREDESIGN.CO.UK

2020[®]
FURNITURE DESIGN