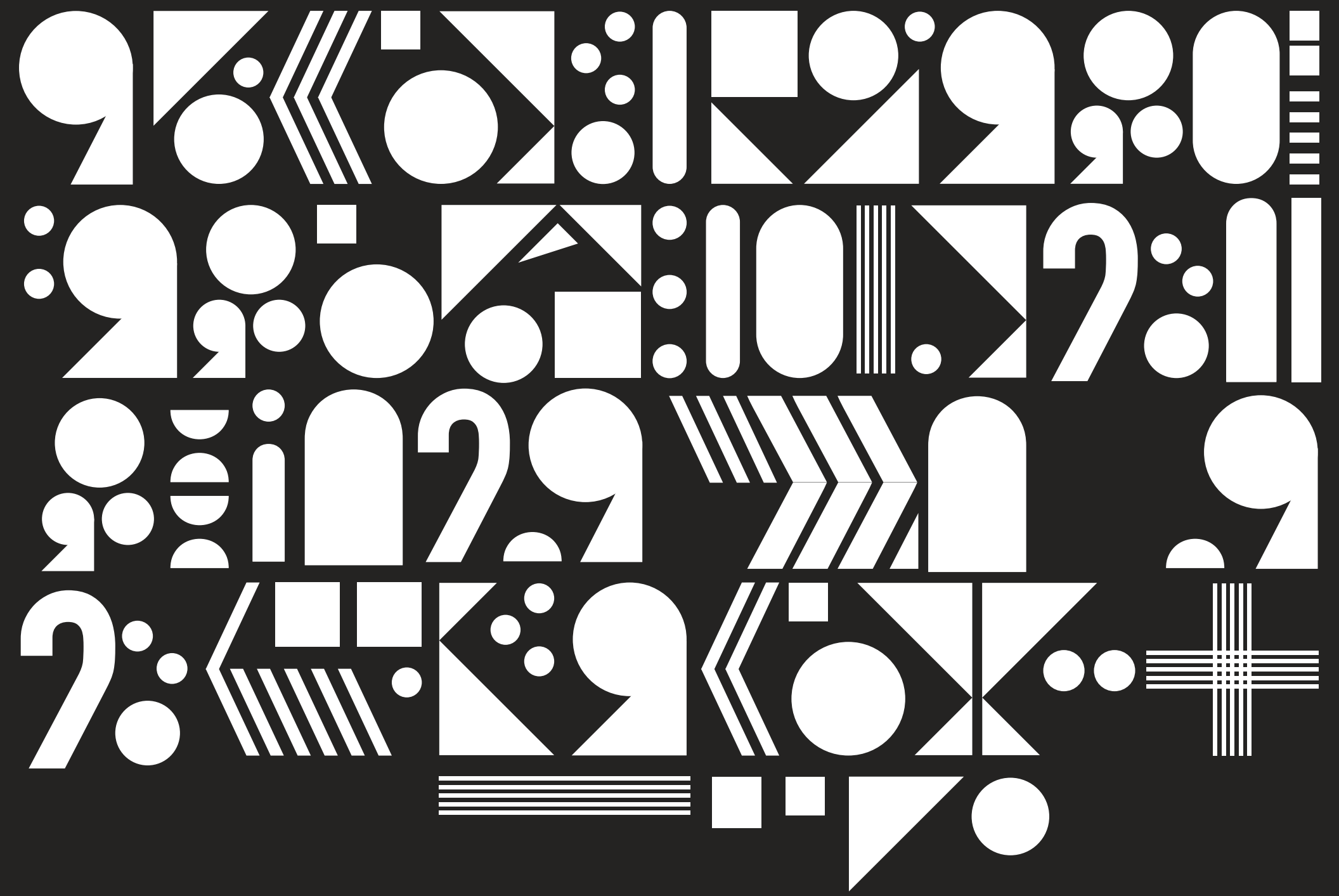


2020[®]

FURNITURE DESIGN

MONO



WHO ARE 2020 FURNITURE DESIGN

SINCE 2011, 2020 FURNITURE DESIGN HAS BEEN AT THE FOREFRONT OF DESIGNING AND MANUFACTURING BREAKOUT FURNITURE FOR THE OFFICE AND EDUCATION MARKET.

OUR MISSION IS SIMPLE: TO PROVIDE VISUALLY APPEALING, COMFORTABLE, AND HIGH-QUALITY FURNITURE THAT REMAINS ACCESSIBLE TO ALL.

WE COLLABORATE CLOSELY WITH FURNITURE DEALERS TO ENSURE THAT PROJECT BUDGETS ARE NO LONGER A BARRIER TO EXCEPTIONAL FURNITURE.

AT 2020 FURNITURE DESIGN, WE OFFER TOP-TIER FURNITURE THAT COMPETES WITH INDUSTRY LEADERS IN QUALITY WITHOUT THE PREMIUM PRICE TAG. WE'RE NOT JUST A FURNITURE COMPANY, WE ARE

'A BREAK FROM THE NORM'

Introducing the MONO: Elevate Your Workspace Experience

The MONO Pod is designed to bring affordability, flexibility, and a sense of well-being to modern workspaces. Customisable with a wide range of fabrics and Standard MFC finishes, it adds warmth, colour, and texture—helping to create an uplifting environment where users can focus, recharge, or take calls in comfort. Whether placed in a busy office or a home study area, the pod contributes to a calmer, more productive space.

Cost-effective and ready to go, the MONO Pod offers exceptional value without compromise. It comes fitted with built-in lighting and a PIR sensor for smart energy efficiency, making it a functional addition to any workspace.

Built with long-term use in mind, the pod features easily replaceable components—minimising waste and extending its lifespan. While not formally acoustically tested, it provides a surprisingly quiet interior suitable for making private calls. Its modular design allows for quick dismantling and relocation between floors or buildings, making it a practical and future-proof choice for evolving office needs. If a component is damaged, there's no need to replace the whole unit—just swap out the part and carry on.

MONO

Designed and manufactured by 2020 Furniture Design





Standard Finishes

2020
FURNITURE DESIGN

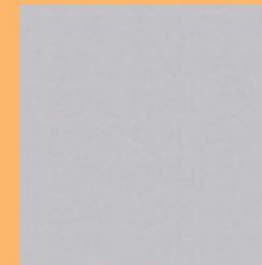
**Kronospan
White 0101**



**Egger
Light Grey
U708**



**Kronospan
Stone Grey
0112**



**Egger
Dust Grey
U732**



**Kronospan
Anthracite
0164**



**Kronospan
Black
0190**



**Kronospan
Maple
0375**




**Egger
Dijon Walnut
H3734**



**Egger
Sorano Oak
H1334**



MONO– Single Phone Booth Pod

Product image	Code	Description	Dimensions mm
	MONO 01	A Phone Pod with MFC surround to the outside, Upholstered inner top half, timber bottom half with option to be upholstered bottom half, posuer height table, lighting with PIR Sensor.	W 1100 x D 900 x H 2235

- *Spot Light Included with PIR Sensor.
- *Black or White Door Frame as standard.
- *Options of different outer panels from our std collection of MFC.
- *Table to match the same colour as outer panels or the Door Frame.
- *Power Module Available (1 x UK Power and A + C Smart Charge) add £90nett.
- *Option to have Air Circulation add £100 nett
- *Option of Upholstered Outer Panels Price On Application.
- *Option to have accoustic glass £160 nett.

HOW UNIQUE IS THE MONO POD?

Sustainable and Replaceable Design
To support long-term use and environmental responsibility, the pod features replaceable components. Should any part become worn or damaged, it can be easily swapped out, extending the life of the product and reducing waste.

Built-In Comfort and Functionality
The pod comes equipped with built-in lighting and a PIR sensor for efficient energy use. These features ensure a comfortable and responsive environment for users during calls or focused work.

Acoustic Performance
While the pod’s acoustic performance has not been formally tested, it provides a reasonably quiet environment, sufficient for making and taking calls without disruption. There is also an option to upgrade tusing a filmed glass to enhance the accoustics.

Relocation and Maintenance
Designed with flexibility in mind, the pod can be dismantled and reassembled, making it ideal for offices that may need to move it between floors or buildings. If any component is damaged, it can be replaced individually, minimizing downtime and cost.

Colour options
To bring a sense of brightness and well-being into any office or study space, the MONO Pod is available in a range of Fabrics and standard MFC finishes which will visually enhance and also create a more inviting and uplifting environment, helping users feel calm, focused, and energised throughout the day.



SPECIALISTS IN BREAK OUT FURNITURE

2020[®]
FURNITURE DESIGN

BRIGADE HOUSE,
ALINGTON ROAD,
LITTLE BARFORD,
ST NEOTS,
CAMBRIDGESHIRE,
PE19 6WG

Account Contact - Mark Brown
mark@2020furnituredesign.co.uk
Mobile - 07398 891127