



SOLUS

# SPECIALISTS IN BREAKOUT SPACES

**CRAFTSMANSHIP AND ENGINEERING ARE AT OUR HEART. WE MAKE THINGS THAT WORK, AND MANUFACTURE INTERESTING AND ENGAGING SOLUTIONS FOR EVERY BREAKOUT SPACE.**

We are design led, blending function with form in a creative and stylish way. Our processes ensure consistency, and our innovative use of the latest CNC technology, ensures quality and reliability. We have been doing this for a long time, with an established team of craftsmen. We know how to design and manufacture, quality soft seating products. Value for money products that bring spaces to life. We lead the way in understanding the breakout and collaborative working space, and work with our dealer partners to bring spaces to life.

We are 2020 Furniture, we are break from the norm.





# SOLUS

Our new Solus range gives you the opportunity to work alone, keeping you secluded in your own bubble away from noise and other distractions helping you to be more productive.

The Solus 'Office' combines an array of interior decoration from timber panels, writable surfaces and upholstered walls. The Office also offers Desking, Pedestal, power supply and fan for air

flow and lighting. The Solus 'Booth' also has an array of interior decoration from timber panels, writable surfaces and upholstered walls. The Solus Booth can be used for quick calls with no furniture or added upholstered seating and arm with tablet including power for a lengthier, comfortable workplace and lighting.













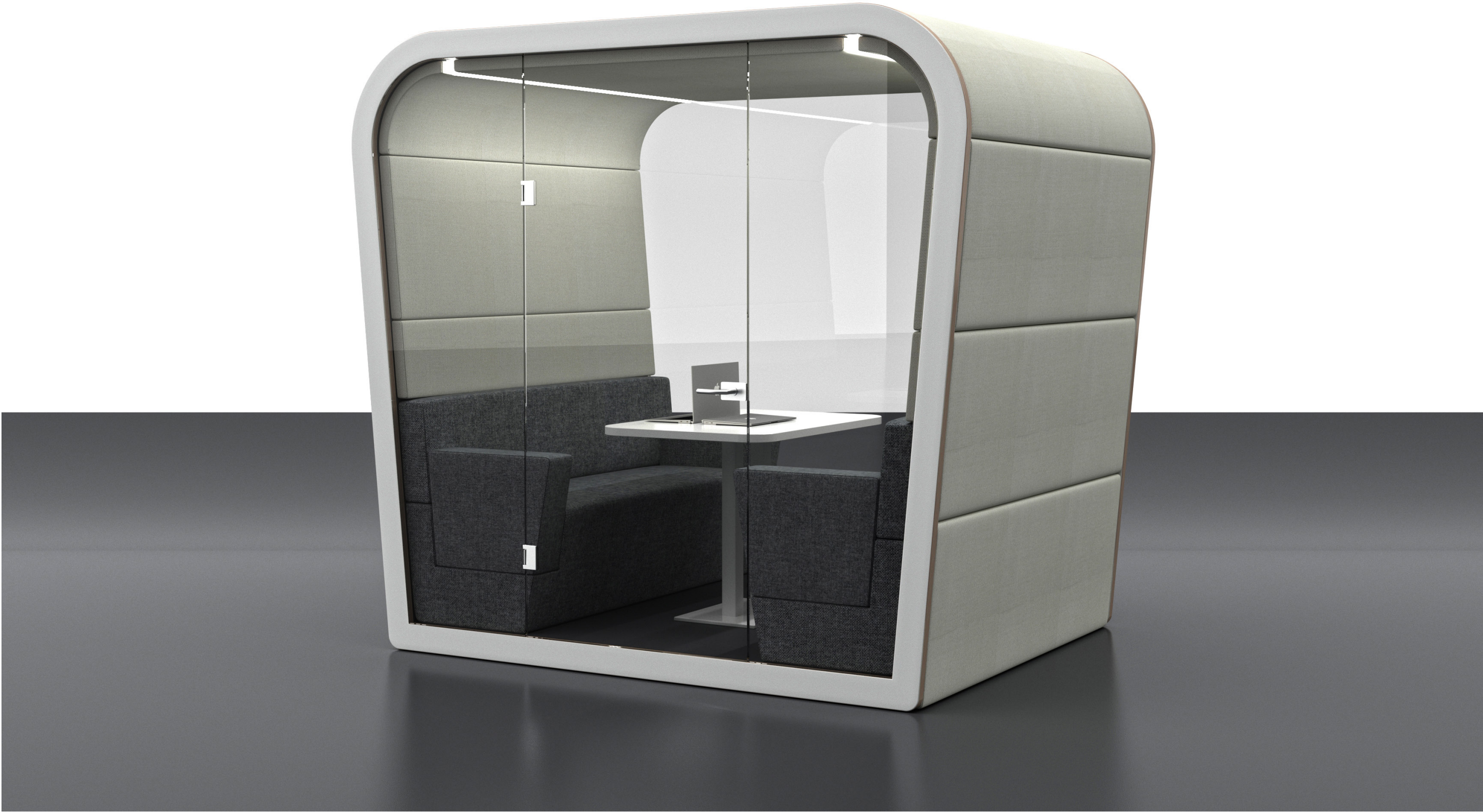




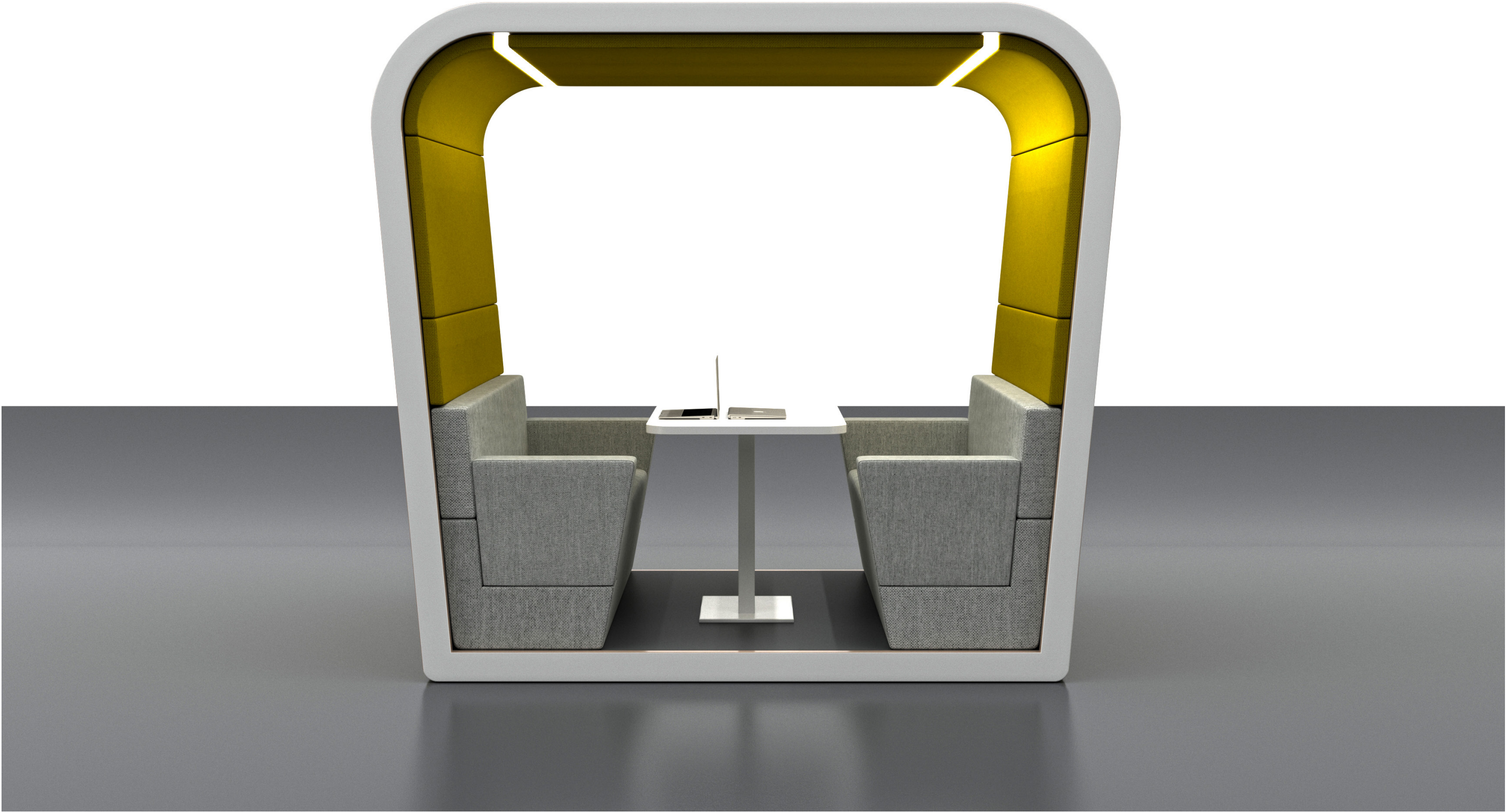




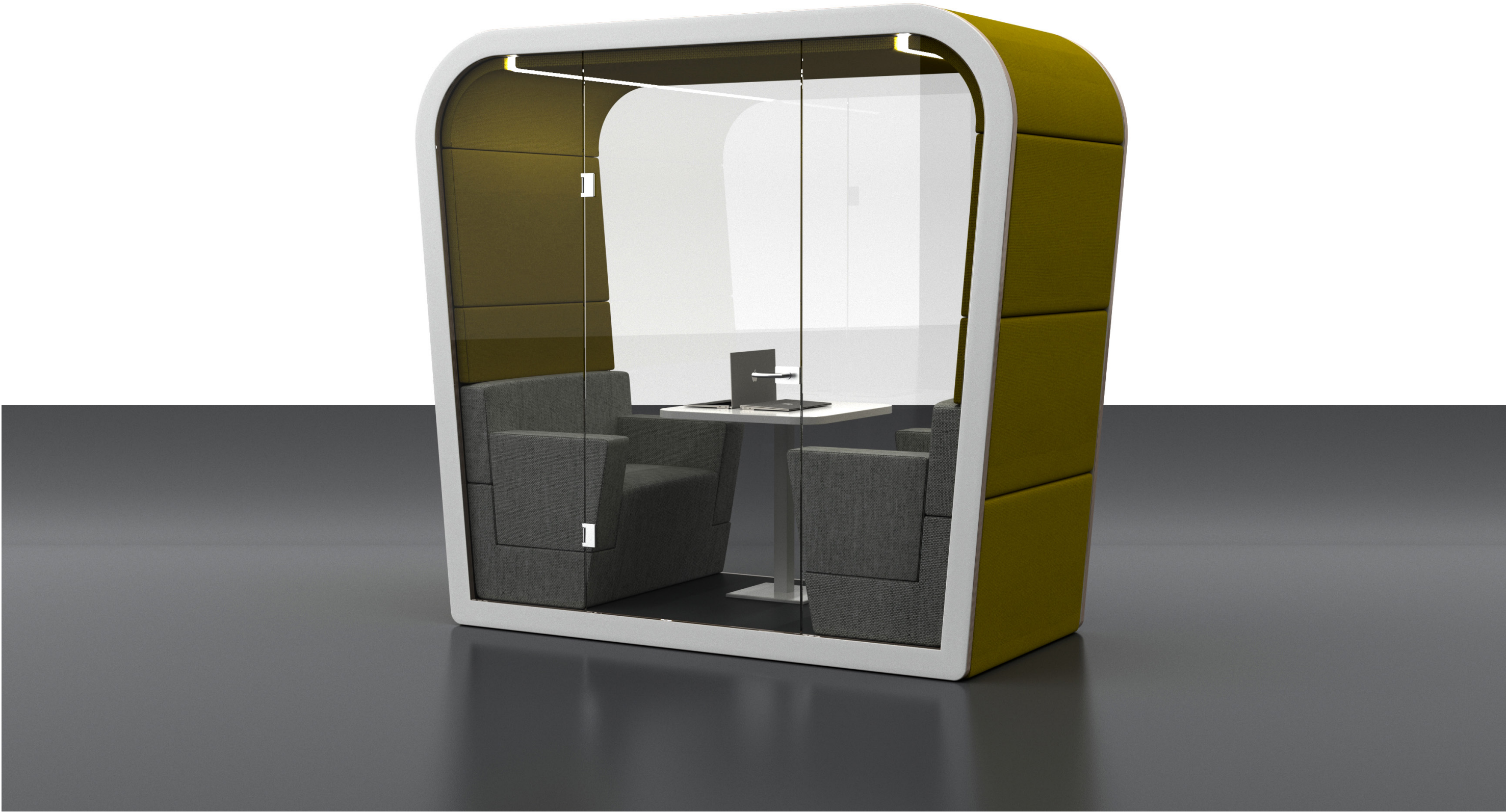














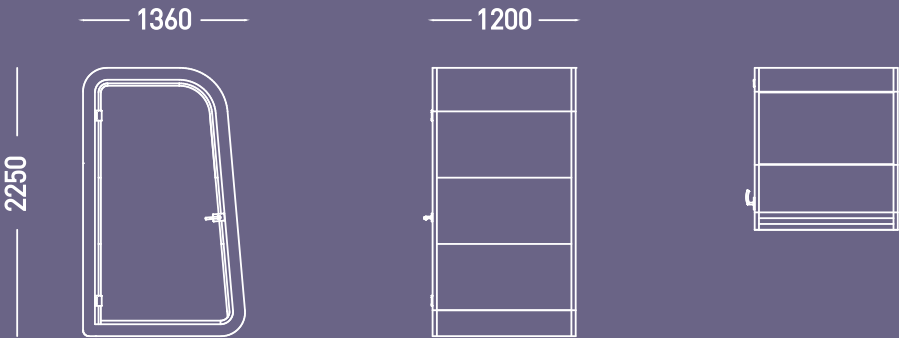


# TAKE A BREAK FROM THE NORM

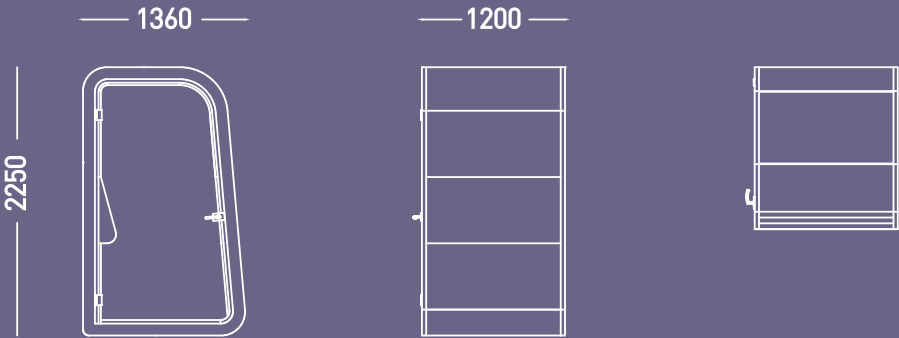


# SOLUS

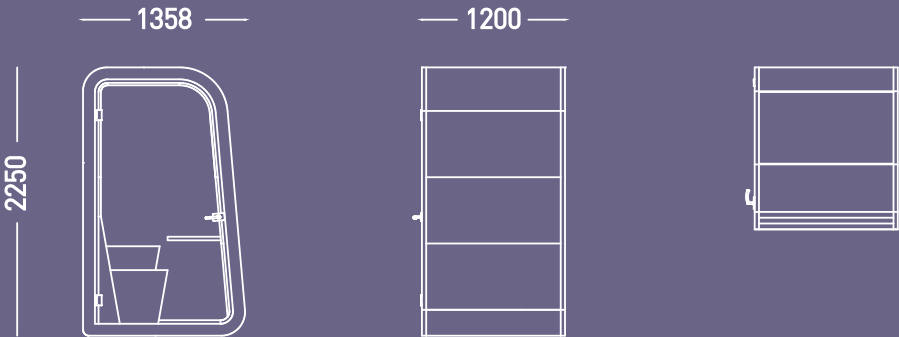
SOL 001



SOL 001 - BR

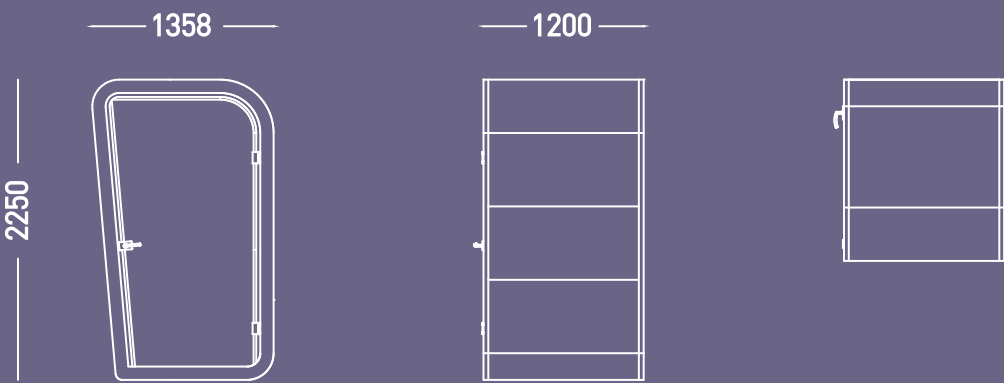


SOL 001 - SP

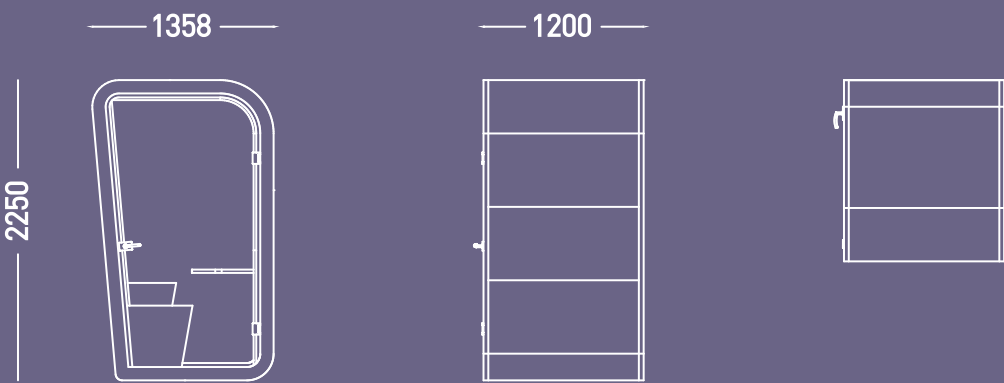


# SOLUS

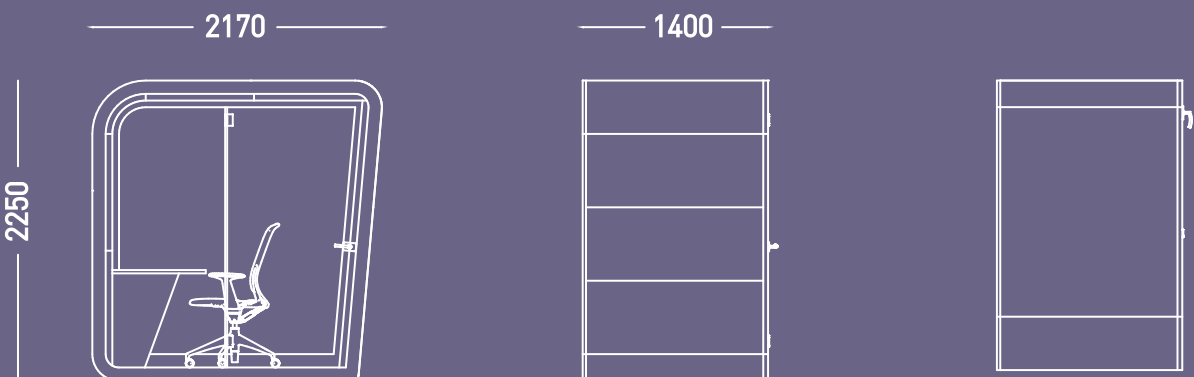
SOL 002



SOL 002 - SP



SOL 003 - 1400





# Responsibility to our environment

- At 2020FD we have our own in house design team, this means that we can control all of the materials that are involved in the production of our furniture from the start. We look to use sustainable materials as much as we can.
- We think about the type of timber and foam that goes into our products. All of the timber we use is supplied by FSC labelled companies taking care of the world's forests. Any foam waste returns back to the foam converters to produce chip foam that we can and do also use.
- We use the latest CAD software to design and lay out our product shapes to make the best savings on materials as much as we can keeping material waste as tight as possible.
- Staying away from Land Fill is one of our main priorities at 2020. At 2020FD we have invested in a furnace which uses all of our timber waste as fuel to heat the water and factory giving us cleaner air and less Co2 emissions.
- We use a lot of fabric material at 2020 and although we nest our patterns the best way we can to produce the least waste possible we have off cuts, we help guide our clients to use materials that are natural and compostable.
- Our in house marketing produces PDF brochures and price list which is constantly updated. The amount of printing we produce is extremely minimal.
- Where we can we try to make deliveries the most economical way possible to use as less fuel as possible. We also offer electric vehicles to our sales team reducing transport emissions.









**2020<sup>®</sup>**  
FURNITURE DESIGN

BRIGADE HOUSE  
ALINGTON ROAD  
LITTLE BARFORD  
ST NEOTS  
PE19 6WG

TEL: 01767 677 256  
E-MAIL: SALES@2020FURNITUREDESIGN.CO.UK

[WWW.2020FURNITUREDESIGN.CO.UK](http://WWW.2020FURNITUREDESIGN.CO.UK)