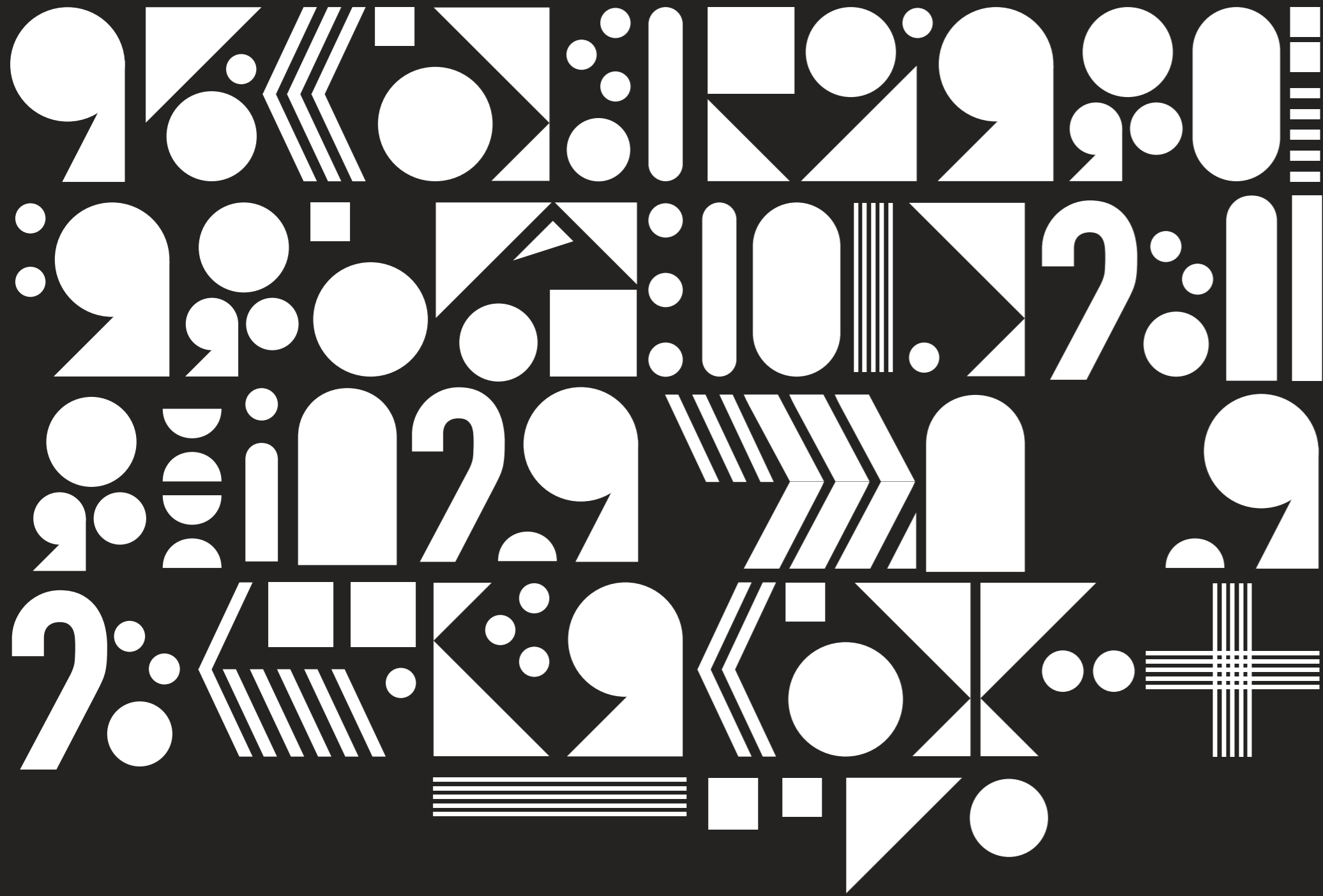


2020[®]
FURNITURE DESIGN



WHO ARE 2020 FURNITURE DESIGN

SINCE 2011, 2020 FURNITURE DESIGN HAS BEEN AT THE FOREFRONT OF DESIGNING AND MANUFACTURING BREAKOUT FURNITURE FOR THE OFFICE AND EDUCATION MARKET.

OUR MISSION IS SIMPLE: TO PROVIDE VISUALLY APPEALING, COMFORTABLE, AND HIGH-QUALITY FURNITURE THAT REMAINS ACCESSIBLE TO ALL.

WE COLLABORATE CLOSELY WITH FURNITURE DEALERS TO ENSURE THAT PROJECT BUDGETS ARE NO LONGER A BARRIER TO EXCEPTIONAL FURNITURE.

AT 2020 FD, WE OFFER TOP-TIER FURNITURE THAT COMPETES WITH INDUSTRY LEADERS IN QUALITY WITHOUT THE PREMIUM PRICE TAG. WE'RE NOT JUST A FURNITURE COMPANY, WE ARE

'A BREAK FROM THE NORM'

Introducing the SESSION Range: Elevate Your Workspace Experience

Session is our flagship collection of contemporary collaboration pods, meticulously designed to redefine the modern workspace. Whether it's in the office, educational institutions, or leisure environments, Session pods boast a sleek, visually striking design that effortlessly enhances any space.

With its modern aesthetic, Session adds a touch of sophistication to any environment, fostering an atmosphere conducive to productivity and creativity. Tailor your Session pod to your exact specifications with a range of customizable features, including versatile roof styles and advanced power and lighting options.

SESSION

Designed and manufactured by 2020 Furniture Design

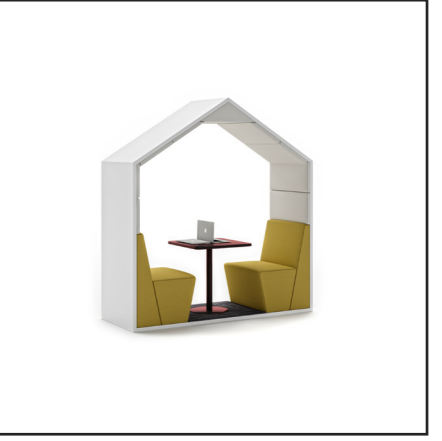
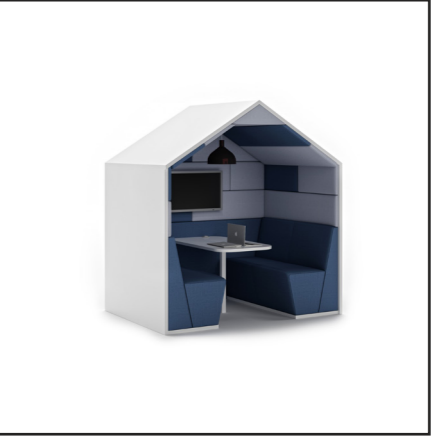
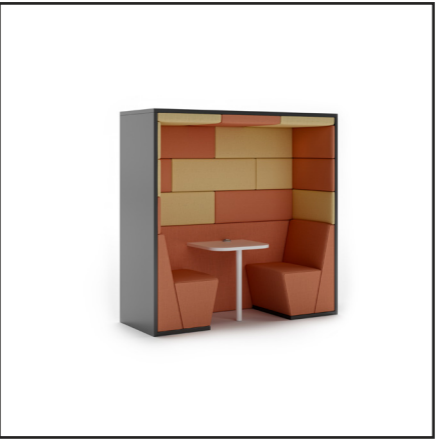


Introducing the SESSION Range: Elevate Your Workspace Experience

Introducing the Session Range: where cutting-edge design meets unparalleled functionality for a superior workspace experience. Elevate your environment with our sleek, glass-front booths featuring innovative magnetic suction doors, providing top-tier acoustics for a serene and productive atmosphere. Each Session Glass booth is equipped with intelligent lighting controlled by a PIR sensor and an efficient air circulation system, with an optional power supply, ensuring maximum comfort and convenience.

Personalize your space with our vibrant color options for both surrounds and doors, allowing you to reflect your unique style. The latest addition, the Session Room, offers versatile solutions for various needs: spacious enough for standing presentations, seating around a low table, or stools around a poser-height table. Ideal for offices, educational settings, and public spaces, the Session Range is the ultimate tailored solution to transform and elevate any environment.

Experience unparalleled comfort with our booths, featuring a soft foam and webbed seat with a perfectly pitched back, ensuring you stay comfortable and supported throughout your day. Committed to sustainability, some of our booths are about 80% recyclable and crafted using approximately 30% recycled materials, ensuring your workspace is as environmentally friendly as it is stylish. Room, a versatile space that accommodates standing presentations, seating around a low table, or stools around a poser-height table. Perfect for meetings, collaborative work, or individual focus time, the Session Range offers a tailored solution to elevate your workspace experience.



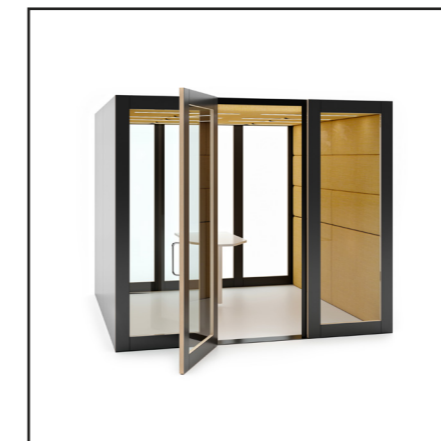


Are you making the right choice choosing anything else.

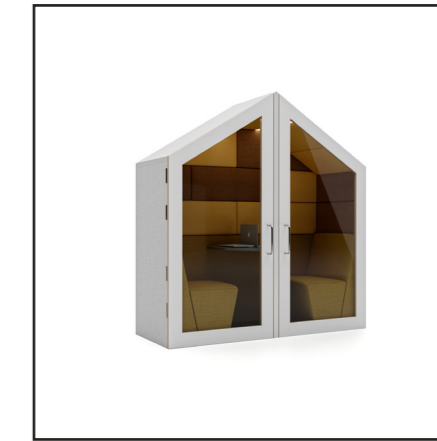
From private work sessions to collaborative group brainstorming, Session adapts seamlessly to various settings and purposes, making it the ideal solution for dynamic work environments. Equipped with cutting-edge features, Session ensures an unparalleled user experience, supporting diverse work styles and enhancing overall efficiency offering an in house tested DB rating of 36db.

Experience the perfect blend of functionality and style with Session, the ultimate choice for your modern workspace needs. Whether you're looking to transform your corporate office, educational facility, or recreational space, Session provides the ideal balance of privacy and collaboration, fostering an environment where innovation thrives.

Elevate your workspace with Session and discover a new standard of contemporary collaboration.



SPECIALISTS IN BREAK OUT FURNITURE



Session Pod MFC Surround Collection

Product image	Code	Description	Dimensions mm
	SES 01	A two seater booth with flat roof, table and upholstered pads.	W 2060 x D 750 x H 2200
	SES 02	A four seater booth with flat roof, table and upholstered pads.	W 2060 x D 1400 x H 2200
	SES 03	A two seater booth with flat roof, table with floor.	W 2060 x D 750 x H 2200
	SES 04	A four seater booth with flat roof, table with floor.	W 2060 x D 1350 x H 2200
	SES 05	A two seater booth with pitched roof, table and upholstered pads.	W 2060 x D 750 x H 2000
	SES 06	A four seater booth with pitched roof, table and upholstered pads.	W 2060 x D 1400 x H 2215
	SES 07	A two seater booth with pitched roof, table with floor.	W 2060 x D 750 x H 2215
	SES 08	A four seater booth with pitched roof, table with floor.	W 2060 x D 1400 x H 2215
	SES 09	A two seater booth with open top, table, upholstered pads and flooring.	W 2060 x D 750 x H 1920
	SES 10	A four seater booth with open top, table, upholstered pads and flooring.	W 2060 x D 1400 x H 1920
	SES 11	A single seater phone booth with flat roof, table and upholstered pads.	W 1100 x D 750 x H 2200
	SES 12	A six seater booth with pitched roof, table and upholstered pads.	W 2060 x D 2100 x H 2215

***Pricing includes standard MFC panels and table top on pedestal or pole leg.**
***Power, Lighting and Tv brackets available POA**

Session Pod MFC Surround with Glass doors Collection 36db

Product image	Code	Description	Dimensions mm
	SES 01 G	A two seater MFC exterior booth with Glass door, flat roof, table and upholstered seat, back & pads. Includes lighting, air circulation and PIR Sensor.	W 2060 x D 750 x H 2200
	SES 02 G	A four seater MFC exterior booth with Glass door, flat roof, table and upholstered seat, backs & pads. Includes lighting, air circulation and PIR Sensor.	W 2060 x D 1400 x H 2200
	SES 05 G	A two seater MFC exterior booth with Glass door pitched roof, table and upholstered seat, backs & pads. Includes lighting, air circulation and PIR Sensor.	W 2060 x D 750 x H 2000
	SES 06 G	A four seater MFC exterior booth with Glass door pitched roof, table and upholstered seat, backs & pads. Includes lighting, air circulation and PIR Sensor.	W 2060 x D 1400 x H 2215
	SES 11 G	A single seater MFC exterior booth with Glass door pitched roof, table and upholstered seat, backs & pads. Includes lighting, air circulation and PIR Sensor.	W 1100 x D 750 x H 2200
	SES 15 G	A Session Room with MFC exterior with upholstered pads & table allowing for DDA, wheel chair access.	W 2600 x D 2700 x H 2200

***Pricing includes MFC surround panels and table top on pedestal or pole leg.**
***Pricing includes Lighting & Air circulation with PIR Sensor.**
*** Power Module 2 x UK Power and A/C Smart -Charge £100 nett.**
*** Tv bracket and cable management add £75 nett.**
***All Session Booths have an option of glass wall to the back of the booth POA.**
***All Session enclosed Pods meet standard industry acoustic levels of 36 decibels.**

Session Pod Upholstered Surround with Glass doors Collection 36db

Product image	Code	Description	Dimensions mm
	SES 01 U - G	A two seater upholstered exterior booth with Glass door, flat roof, table and upholstered seat, back & pads. Includes lighting, air circulation adn PIR Sensor.	W 2060 x D 750 x H 2200
	SES 02 U - G	A four seater upholstered exterior booth with Glass door, flat roof, table and upholstered seat, backs & pads. Includes lighting, air circulation adn PIR Sensor.	W 2060 x D 1400 x H 2200
	SES 05 U - G	A two seater upholstered exterior booth with Glass door pitched roof, table and upholstered seat, backs & pads. Includes lighting, air circulation adn PIR Sensor.	W 2060 x D 750 x H 2000
	SES 06 U - G	A four seater upholstered exterior booth with Glass door pitched roof, table and upholstered seat, backs & pads. Includes lighting, air circulation adn PIR Sensor.	W 2060 x D 1400 x H 2215
	SES 11 U - G	A single seater upholstered exterior booth with Glass door pitched roof, table and upholstered seat, backs & pads. Includes lighting, air circulation adn PIR Sensor.	W 1050 x D 750 x H 2200
	SES 15 U - G	A Session Room with upholstered exterior with upholstered pads & table allowing for DDA, wheel chair access.	W 2600 x D 2700 x H 2200

- *Pricing includes Upholstered surround panels and table top on pedestal or pole leg.
- *Pricing includes Lighting & Air circulation wit PIR Sensor.
- * Power Module 2 x UK Power and A/C Smart -Charge £100 nett.
- * Tv bracket and cable management add £75 nett.
- *All Session Booths have an option of glass wall to the back of the booth POA.
- *All Session enclosed Pods meet standard industry acousic levels of 36 decibels.

FABRIC BANDS

<u>BAND 1</u>	<u>BAND 2</u>
CAMIRA ERA	CAMIRA BLAZER
CAMIRA RIVET	CAMIRA SYNERGY
	CAMIRA MAINLINE FLAX
	CAMIRA 24/7
	CAMIRA HEMP
	CAMIRA SILK
	CAMIRA TRACK
	CAMIRA MAINLINE PLUS
	PANAZ HIGHLAND
	PANAZ HIGHLAND STRETCH
<u>VINYL</u>	
	PANAZ ZEST
CAMIRA VITA	PANAZ ASTON
<u>SCREEN FABRICS</u>	
CAMIRA CARA	CAMIRA BLAZER LITE
CAMIRA LUCIA	CAMIRA SYNERGY 170

2020 Furniture Design use many fabric companies which are available upon request.

GENERAL:

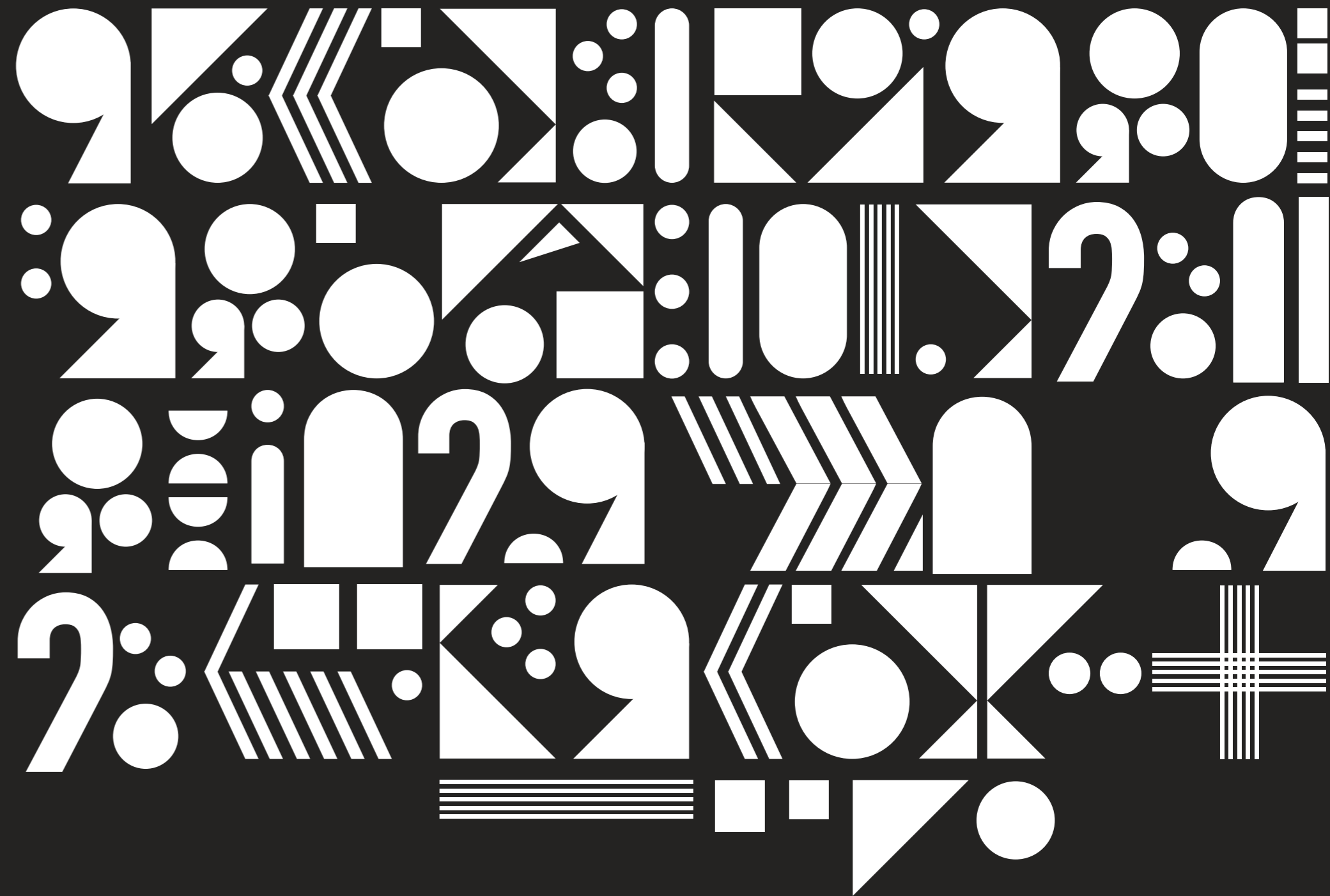
- All prices are in pound sterling and do not include vat.
- By purchasing from 2020 furniture design you agree to our standard terms and conditions.

DELIVERY & LEAD-TIMES:

- All pricing is exclusive of delivery or installation and this is provided as a separate cost on each project. Please contact your account manager for more information.
- Our standard lead-time for products in our RRP is 4 - 6 weeks, though this is subject to change. Especially during the summer months.
- If you require delivery quicker than 6 weeks then please contact your account manager.
- Bespoke products are likely to be on an extended lead-time.

WARRANTY

- 5 Years - normal fair wear & tear.
- This includes the structure and foam / padding materials.
- Fabrics are covered by fabric manufacturers' warranty, usually 5 years, dependant on fabric choice.
- Expected life cycle of 15 years.



2020[®]

FURNITURE DESIGN

BRIGADE HOUSE,
ALINGTON ROAD,
LITTLE BARFORD,
ST NEOTS,
CAMBRIDGESHIRE,
PE19 6WG

Account Contact - Scott Gilmour
scott@2020furnituredesign.co.uk
Mobile - 07985 551 759